



**BWS** BEST WAY  
STONE<sup>®</sup>

2021 Landscape Products





All you need  
are the best  
ingredients.

1

**The best  
team.**

---

2

**A good  
foundation.**

---

3

**Curated  
product.**

---

There's so much more that goes into creating hardscape products. It's a mix of ingredients that gives them integrity. When you choose Best Way Stone®, you're installing hardscape products that stand up – to time, to the elements, and to your exacting standards.





# 1 The best team.

## The BWS Family

Best Way Stone is about endurance: products that last, styles that last, and as a family-owned and operated business since 1965, we want our relationships to last, too. That's why we continue to craft our products locally, independently, and back it with a transferable lifetime guarantee. We're family, and we're here for you.





**Independently Owned;  
Family Operated**

Best Way Stone is one of only a few independent family-owned, pre-cast concrete manufacturing businesses. And that philosophy permeates everything we do. Our team is family – and one that puts your family’s needs first. Even as we’ve grown and expanded to new locations, we’ve still maintained our flexibility to respond quickly to both market demands and home-owner needs. This allows us to innovate quickly.





INGREDIENTS FOR SUCCESS

## Our Dealer Network

Our extended family includes an extensive network of dealers located throughout Ontario, Quebec, and North-East Michigan. Our dealers will help you visualize your landscape by pairing the right products with your project design and style needs.

Visit our website to find a dealer near you:

[www.bestwaystone.com/dealers](http://www.bestwaystone.com/dealers)

# The best products built using the best practices.





### **The Right Partner**

Hiring a qualified hardscaper makes installing hardscape products a much more efficient experience. When hiring a qualified professional we recommend they follow industry-standard guidelines.

We recommend collecting project references and samples of previous work. Make sure they offer a comprehensive warranty and have all the required insurance and licenses.

Any certified contractor will understand the industry standards for installing hardscape products – you can download a copy of these guidelines by visiting [www.icpi.org](http://www.icpi.org).

Visit our website to find a hardscaper near you: [www.bestwaystone.com/hardscaper](http://www.bestwaystone.com/hardscaper)

# **That's the best way.**

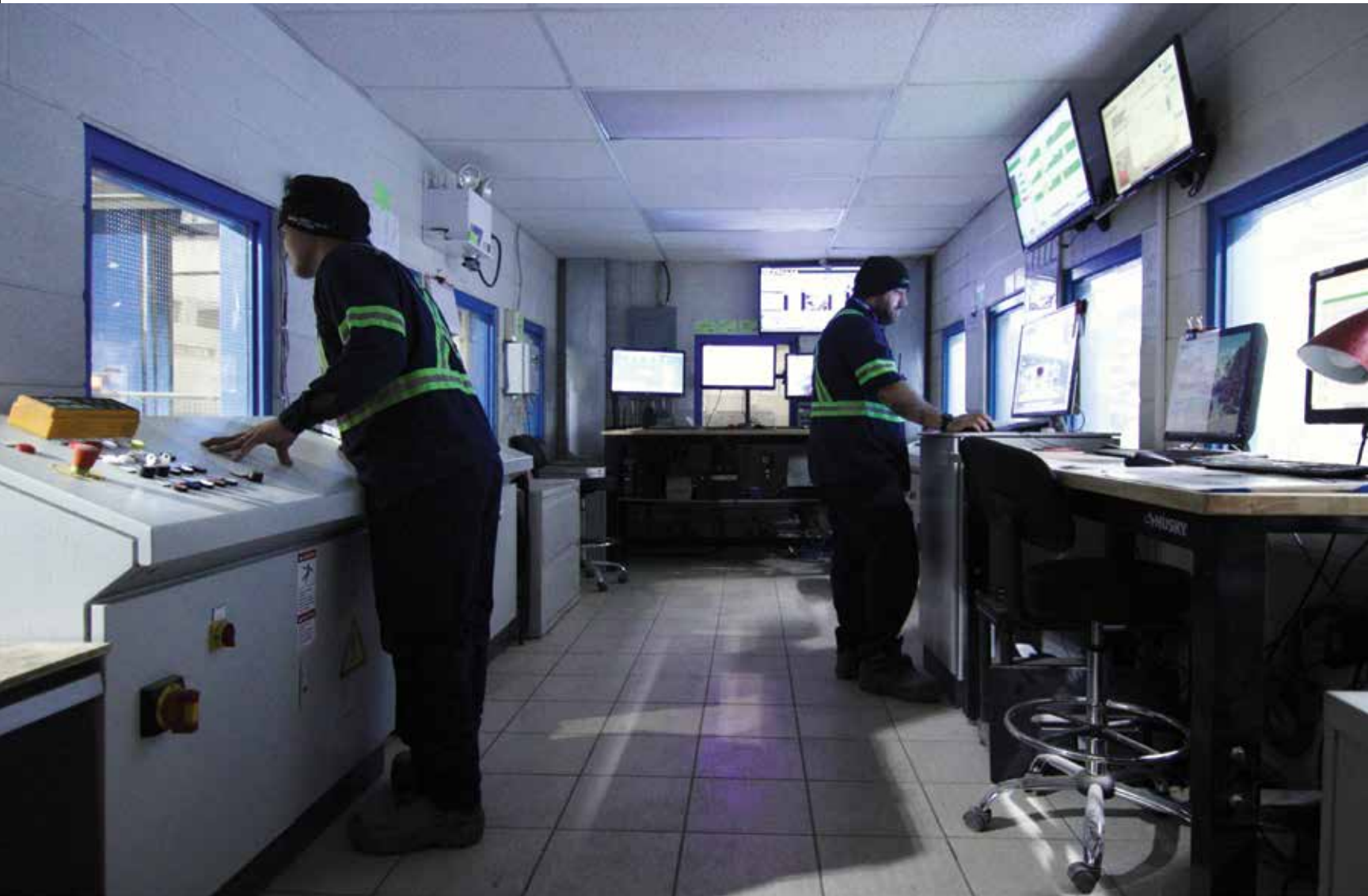




## 2 A good foundation.

### Manufacturing Leads Design

Hardscaping solutions should be designed to last. So our philosophy is that manufacturing processes should always influence product design.



### **Thoughtful Innovation**

We've built production facilities and equipped them with manufacturing technology and our own proprietary processes that are engineered specifically to ensure our products are well-planned, well-designed and well-made.

With two state-of-the-art manufacturing facilities, and dealers spread out across Ontario, Quebec, and Michigan, we're completely independent and able to both hear and respond to your needs.





Our pavers and slabs are resistant to the elements, exceeding all industry standards, standing up to salt, oil, gas, and chlorine.

---



Our products are built using two key ingredients: quality and care. All are manufactured to meet and exceed their respective North American standards set by both the CSA and ASTM.

---



That commitment to quality is backed by our transferable lifetime guarantee on the structural integrity of our pavers. You can learn more about our transferable lifetime guarantee on our website: [bestwaystone.com](https://bestwaystone.com)

---

# Designed to last generations.

One of the most common questions we get from customers purchasing hardscape products is how they will wear over time. Our recent technological advancements provide layers of enriched surfaces and colour, bringing product aesthetics and performance to the next level.



The DesignLoc surface refinement technology is a strategic mix design that produces a highly controlled and refined surface offering.



ChromaTec protective surface enhancer adds a level of protection that helps resist the threat of stains from foreign elements while enhancing the vibrancy of the coated surface.







### 3 Curated product.

Today's landscapes are thoughtfully and creatively built for living, working and playing, and bring together form and function for a quality outdoor experience. No matter what budgets or timelines await you this year, there are plenty of ways to incorporate modern tastes into hardscaping designs. Whether you're planning a full outdoor revamp, or just installing a new element or two, selecting the right product can make all the difference. We make it less overwhelming by providing a highly curated product portfolio that works seamlessly together.

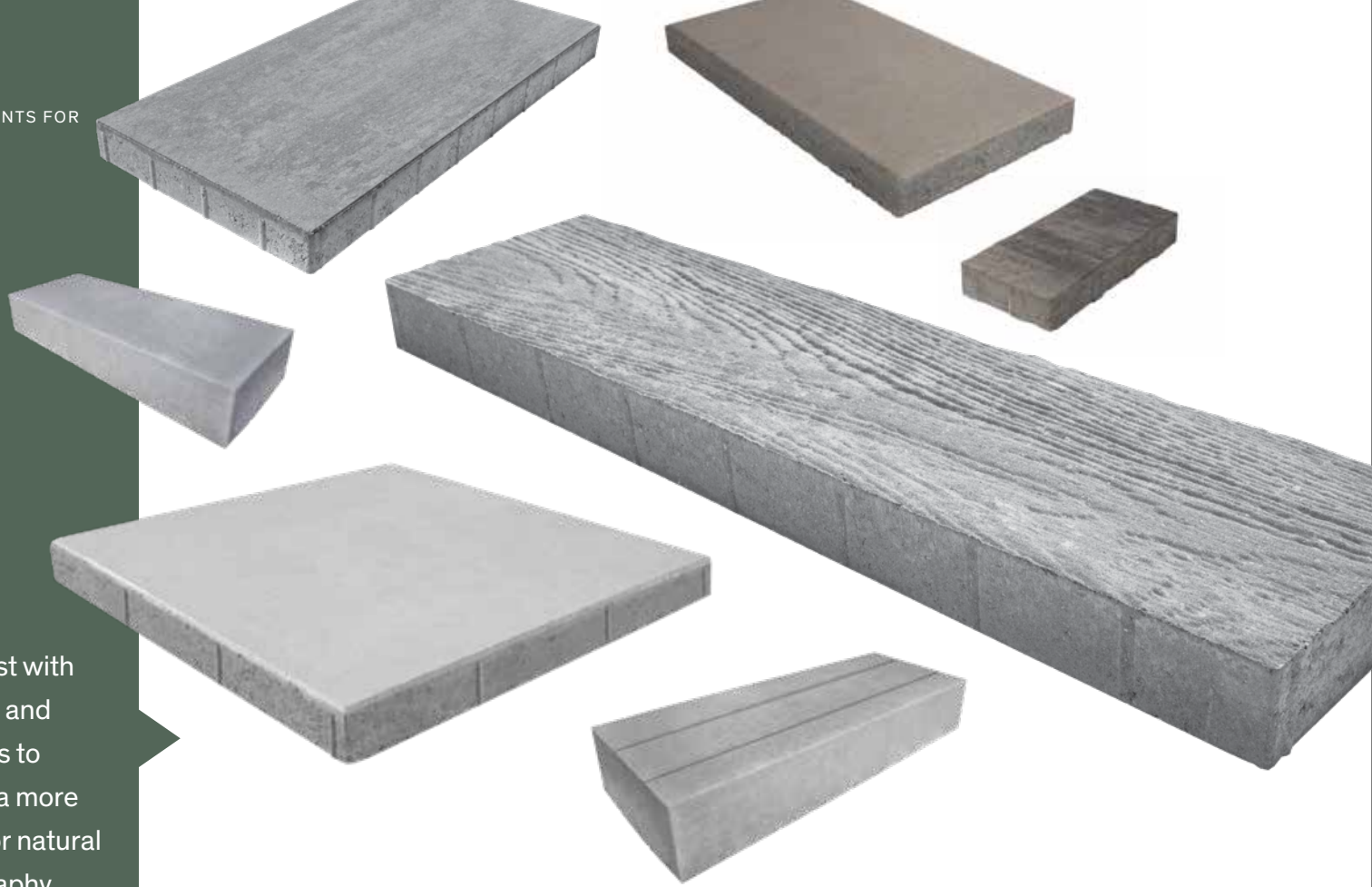


### **Flexible Solutions**

Open to exploring fresh options but just one step at a time? Then porcelain pavers can be a good transitional product. Interested in being environmentally conscious? Permeable pavers offer some great advantages for water management and conservation. Looking to stand out? Mixing colours and textures can create more geometric patterns, adding touches of personality to otherwise uniform spaces.



INGREDIENTS FOR  
SUCCESS



### Form

Contrast with shapes and textures to create a more rustic or natural topography.

**Combining quality hardscape materials is the best way to create your dream landscape.**

### Scale

Combining various sizes draws attention to key areas in your landscape.





BEIGE MIX



BUFF MIX



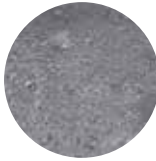
CARRARA



CHARCOAL



DRIFTWOOD



EBONY



GLACIER CREEK



GRANITE



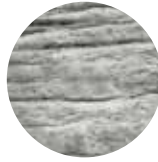
GREY



GREY MIX



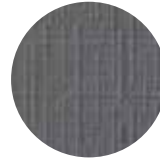
HARBOUR GREY



MANITOU



MUSKOKA



NIGHTFALL



PEARL



PHANTOM



RED MIX



SAHARA BLEND



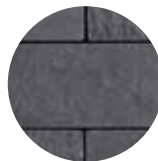
SALMON MIX



SANDSTONE



SILVER BIRCH



ULTRA BLACK



WHITE



WINDSOR BLEND



WINTERBORN

## Colour

Lighter colours can make a landscape seem larger, while darker colours make large expanses feel more intimate. Mix the two to create areas of personality and warmth.



TREVISTA TEXTURED



BELVEDERE



TREVISTA SMOOTH



BASKETWEAVE



HAZELTON

## Texture

With a variety of surface textures to choose from, we have your landscape style covered. Make a bold statement by combining different product textures in your design to create visual interest.



# New for 2021

Take a look at what's new for the 2021 season. We are constantly pushing the edge of product design, to see all our new products visit [www.bestwaystone.com/newproducts](http://www.bestwaystone.com/newproducts)

## Carrara

Our modern and bold Carrara colour is now available throughout our Opus and Trevista collection of products.



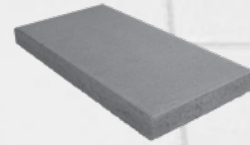




HARBOUR GREY



ULTRA BLACK



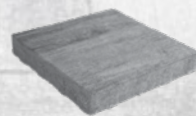
### Lyra slab

This 12x24 slab provides both a modern design and a highly detailed surface. Lyra offers a contemporary smooth finish, and is offered in two beautiful colours.



### Ventura slab

This family of slabs offers a large format finish with a subtle pop of texture. Ventura will bring a grand elegance to any pool deck, patio or walkway.

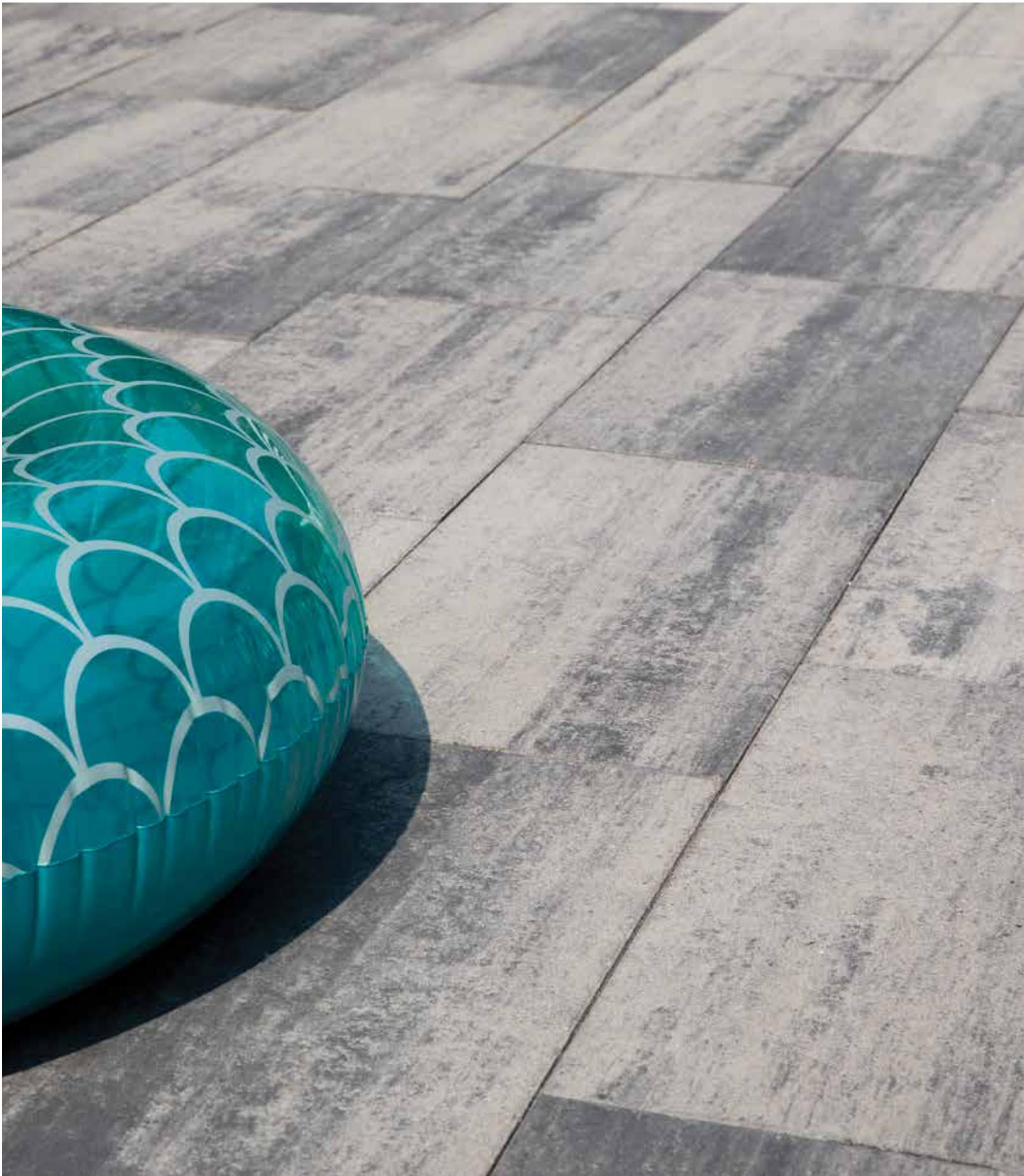


CARRARA



GLACIER CREEK









Live.  
Work.  
Play.

**Whatever the purpose,  
Best Way Stone brings  
it to life.**

# 2021 Lookbook

Yes, a well-designed outside space not only adds property value, it creates a sense of joy every time you return home. The past few years homeowners have found creative ways to build high-impact front entrances and restful backyard retreats that are built to last so they can be used and enjoyed through all the seasons year-after-year.

**Here are a few of our favourites.**





AVARI (GLACIER CREEK)  
& SOHO FIREPLACE (GLACIER CREEK)









BALSAM  
(GLACIER CREEK)





TREVISTA SMOOTH  
(GLACIER CREEK)





SOHO  
(CARRARA)



AVARI (GLACIER CREEK) AND  
SOHO (ULTRA BLACK)





TREVISTA 80 SMOOTH  
(GREY MIX)





AVARI  
(CARRARA)





TRESCA 10X20  
(GLACIER CREEK)



TREVISTA TEXTURED  
(GREY MIX)





CORSO  
(ULTRA BLACK)









TREVISTA 50 SMOOTH  
(GLACIER CREEK)





BALSAM  
(GLACIER CREEK)





CORSO  
(ULTRA BLACK)



TREVISTA 50 SMOOTH  
(GLACIER CREEK) WITH SOHO  
FIREPIT (GLACIER CREEK)





**TREVISTA 50 SMOOTH (GLACIER CREEK)  
& SOHO (GLACIER CREEK)**



**TRESCA (GLACIER CREEK)  
& RIDGEWALL (GREY)**



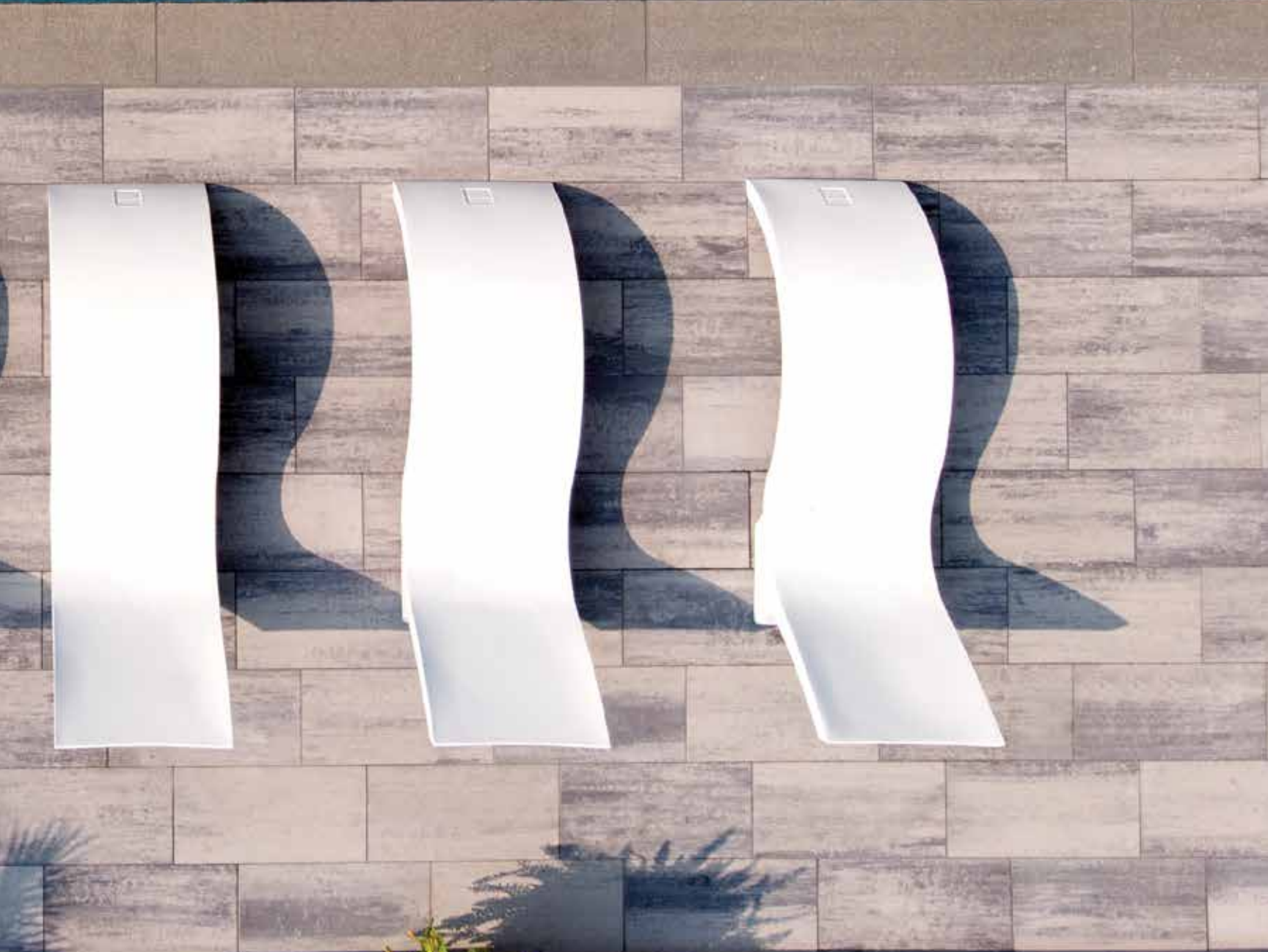


AVARI  
(GLACIER CREEK)









AVARI  
(CARRARA)





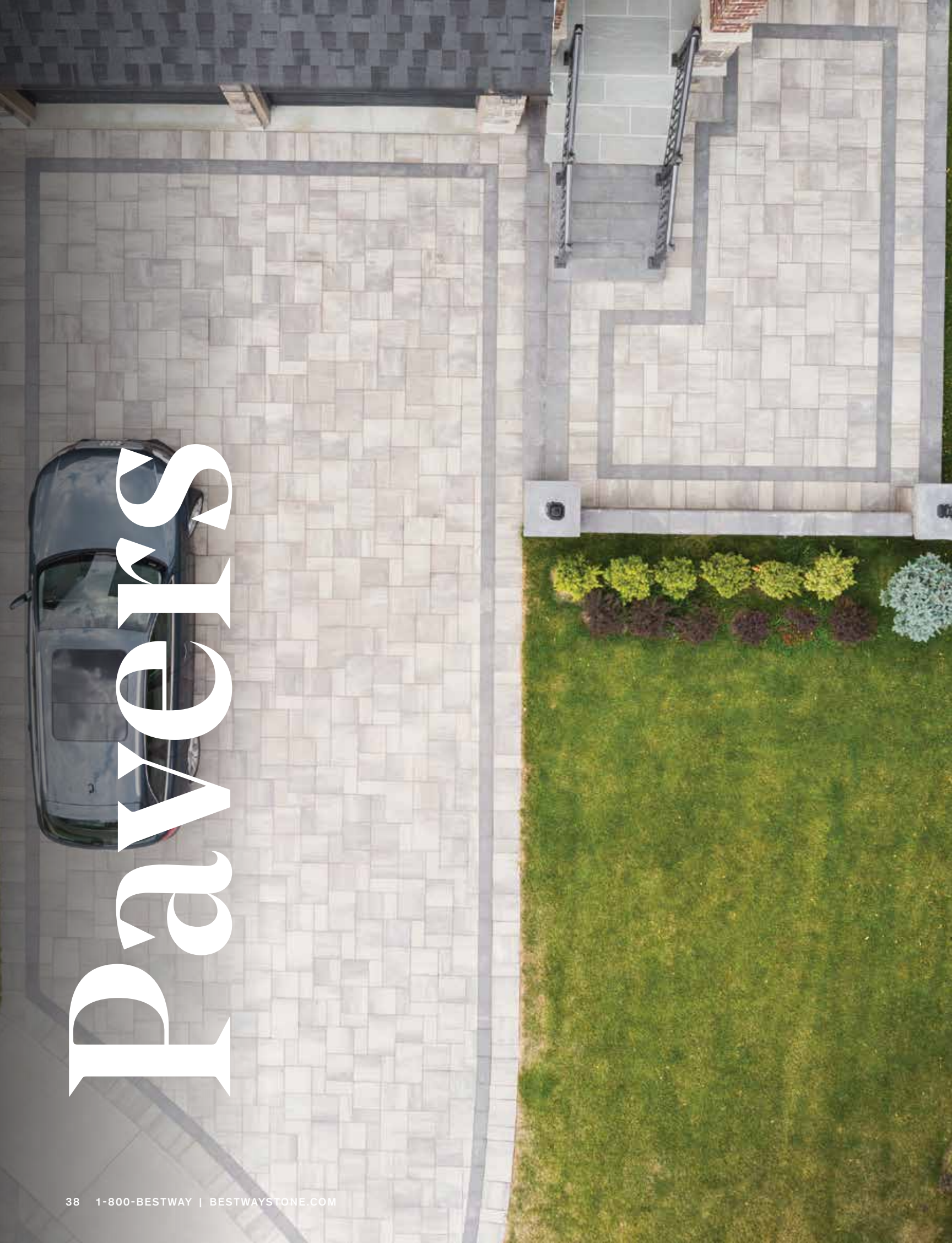
AVARI  
(GLACIER CREEK)





ARDESIA (BEIGE MIX)  
WITH CORSO ULTRA BLACK





# Pavels



Our inspiring selection of interlocking pavers makes it easy to add that much desired curb appeal. From smooth and modern to textured and rustic, our collection of pavers allows you to get creative and express yourself. Add that wow factor to the front of your home, along with the peace of mind of quality, strength and durability. Just see for yourself.

---

- 40 MANHATTAN PLANK
- 42 TREVISTA 80 SMOOTH
- 44 TREVISTA 80 TEXTURED
- 46 RICHMOND 80
- 47 ADELAIDE 80
- 48 STRADA NOVA
- 49 CORSO
- 50 MODERNA
- 50 ARDESIA
- 51 STANDARD & DOUBLE STANDARD
- 51 BELGIUM





GLACIER CREEK

40 1-800-BESTWAY | BESTWAYSTONE.COM




# Manhattan Plank

SIGNATURE SERIES

## UNITS




**A**




---

6.50" x 4.33" x 3.15"  
165mm x 110mm x 80mm

**B**




---

10.83" x 4.33" x 3.15"  
275mm x 110mm x 80mm

**C**




---

12.99" x 4.33" x 3.15"  
330mm x 110mm x 80mm


**D**




---

17.32" x 4.33" x 3.15"  
440mm x 110mm x 80mm

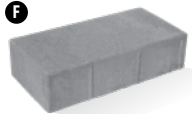
**E**




---

8.66" x 6.50" x 3.15"  
220mm x 165mm x 80mm

**F**




---

12.99" x 6.50" x 3.15"  
330mm x 165mm x 80mm

**G**




---

17.32" x 6.50" x 3.15"  
440mm x 165mm x 80mm

\*ALL UNITS PACKAGED TOGETHER.  
A TO E IS 2:1 TO F AND G.

## COLOURS



GLACIER CREEK



GREY MIX

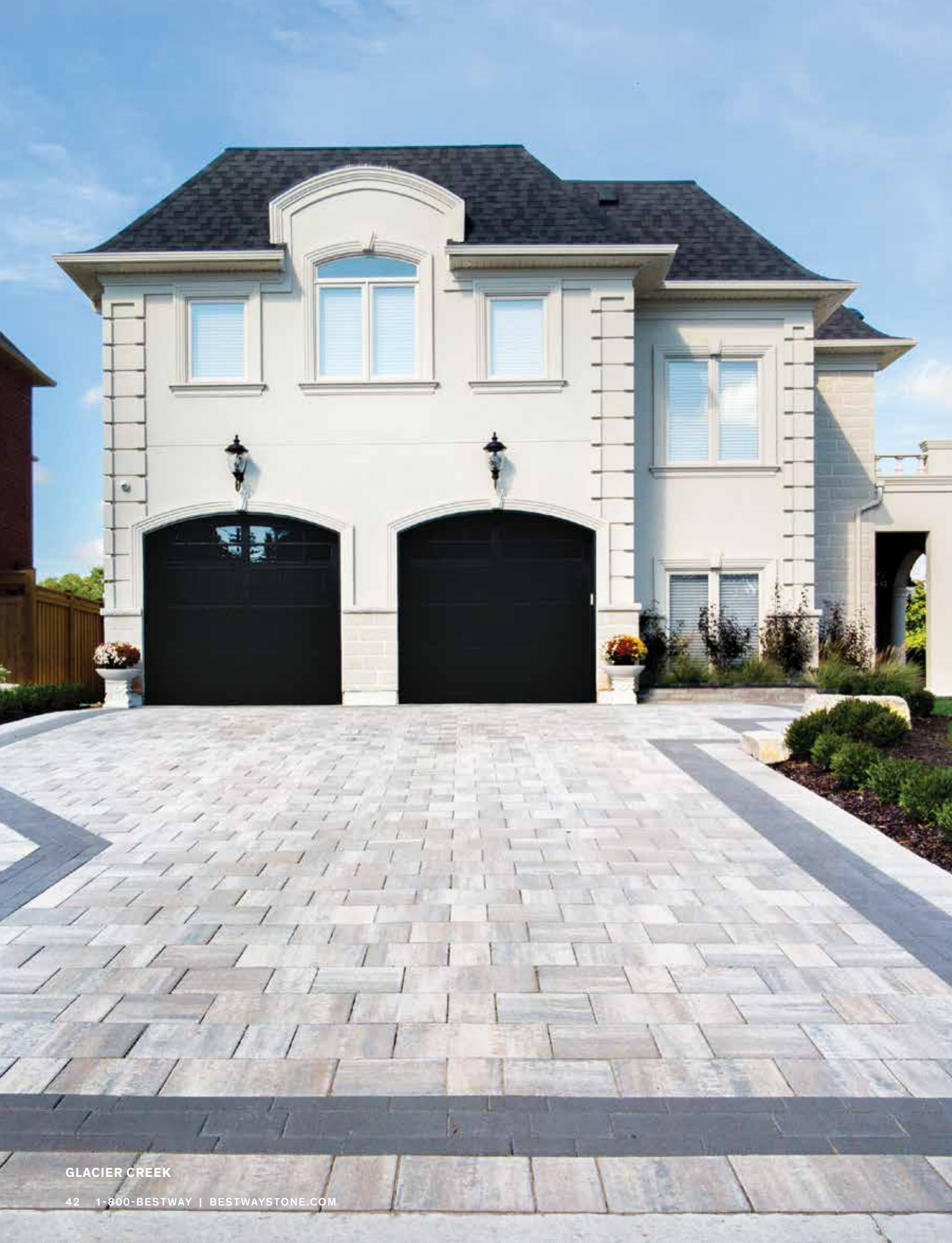


ULTRA BLACK



GLACIER CREEK AND GREY MIX





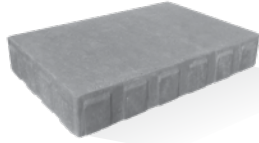
GLACIER CREEK



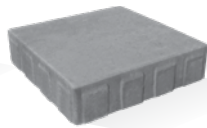
# Trevista 80 Smooth

SIGNATURE SERIES

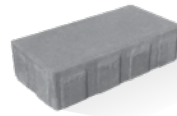
## UNITS



19.5" x 13" x 3.15"  
495mm x 330mm x 80mm



13" x 13" x 3.15"  
330mm x 330mm x 80mm



6.5" x 13" x 3.15"  
165mm x 330mm x 80mm

\*ALL SIZES SOLD AND PACKAGED IN A 1:2:2 RATIO

## COLOURS



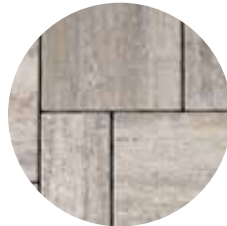
BEIGE MIX



CARRARA



DRIFTWOOD



GLACIER CREEK



GREY MIX



GLACIER CREEK





GLACIER CREEK WITH  
RICHMOND ULTRA BLACK IN-LAY



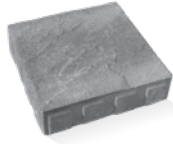
# Trevista 80 Textured

SIGNATURE SERIES

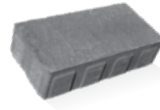
## UNITS



19.5" x 13" x 3.15"  
495mm x 330mm x 80mm



13" x 13" x 3.15"  
330mm x 330mm x 80mm



6.5" x 13" x 3.15"  
165mm x 330mm x 80mm

\*ALL SIZES SOLD AND PACKAGED IN A 1:2:2 RATIO

## COLOURS



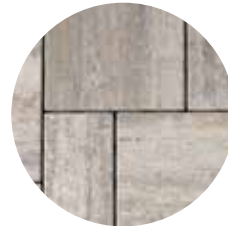
BEIGE MIX



CARRARA



DRIFTWOOD



GLACIER CREEK



GREY MIX



GLACIER CREEK WITH RICHMOND ULTRA BLACK IN-LAY



# Richmond 80

SIGNATURE SERIES

## UNIT

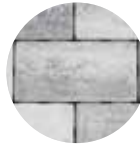


6.5" x 13" x 3.15"  
165mm x 330mm x 80mm

## COLOURS



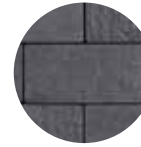
BEIGE MIX



GLACIER CREEK



GREY MIX



ULTRA BLACK



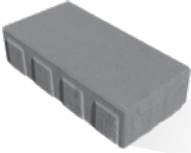
GLACIER CREEK WITH  
ULTRA BLACK INLAY



# Adelaide 80

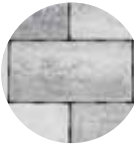
## SIGNATURE SERIES

### UNIT



6.5" x 13" x 3.15"  
165mm x 330mm x 80mm

### COLOURS



GLACIER CREEK



GREY



ULTRA BLACK



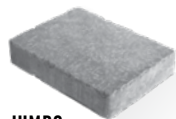
ULTRA BLACK



# Strada Nova

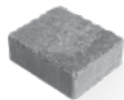
## CLASSIC SERIES

### UNITS



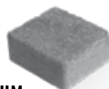
**JUMBO**

10.28" x 13.78" x 2.75"  
261mm x 350mm x 70mm



**LARGE**

8.19" x 6.88" x 2.75"  
208mm x 175mm x 70mm



**MEDIUM**

6.14" x 6.88" x 2.75"  
156mm x 175mm x 70mm



**SMALL**

4.13" x 6.88" x 2.75"  
103mm x 175mm x 70mm

\*ALL SIZES SOLD AND PACKAGED SEPARATELY

### COLOURS



BEIGE MIX



GREY MIX



ULTRA BLACK  
(NOT AVAILABLE  
IN MEDIUM)



GREY MIX



# Corso

## CLASSIC SERIES

### UNITS



9.96" x 5.24" x 2.75"  
253mm x 133mm x 70mm



7.60" x 5.24" x 2.75"  
193mm x 133mm x 70mm



5.24" x 5.24" x 2.75"  
133mm x 133mm x 70mm

### COLOURS



GREY MIX



ULTRA BLACK



\*ALL SIZES SOLD AND PACKAGED TOGETHER IN A 1:1:1 RATIO



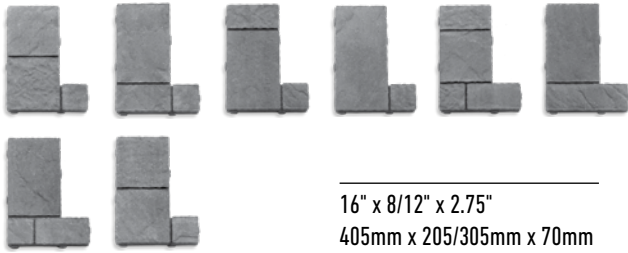
ULTRA BLACK



# Moderna

## CLASSIC SERIES

### UNITS



16" x 8/12" x 2.75"  
405mm x 205/305mm x 70mm

\*ALL UNITS SOLD AND PACKAGED TOGETHER (1 BUNDLE LAYER SHOWN ABOVE)

### COLOURS



BEIGE MIX

GREY MIX



GREY MIX (PERMEABLE)

# Ardesia

## CLASSIC SERIES

### UNITS



19.29" x 10.41" x 2.75"  
490mm x 265mm x 70mm

\*ALL UNITS SOLD AND PACKAGED TOGETHER (1 BUNDLE LAYER SHOWN ABOVE)

### COLOURS



BEIGE MIX

GREY MIX



BEIGE MIX



# Standard & Double Standard

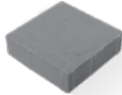
## CLASSIC SERIES

### UNITS



#### STANDARD

3.93" x 7.87" x 2.36"  
100mm x 200mm x 60mm



#### DOUBLE STANDARD

7.87" x 7.87" x 2.36"  
200mm x 200mm x 60mm

### COLOURS



BUFF MIX



BUFF-BROWN MIX



GREY MIX



RED MIX



SALMON MIX



GREY



CHARCOAL



RED

\*DOUBLE STANDARD NOT AVAILABLE IN  
BUFF MIX AND BUFF-BROWN MIX.



GREY MIX (PERMEABLE)

# Belgium

## CLASSIC SERIES

### UNITS



5.9" x 11.8" x 2.36"  
150mm x 300mm x 60mm

### COLOUR



CHARCOAL



CHARCOAL



# Slabs





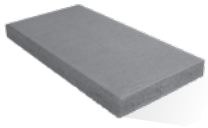
Oversized slabs are the best way to make a big impression. Whether you prefer an extra-large modern design or a traditional slate, we've curated a collection of styles, textures and colours that make mixing and matching a dream in creativity.

---

- 54 LYRA
- 55 VENTURA
- 56 BALSAM
- 58 BW300
- 59 OPUS
- 60 AVARI
- 62 TREVISTA 50 SMOOTH
- 64 TREVISTA 50 TEXTURED
- 66 RICHMOND 50
- 67 ADELAIDE 50
- 68 TRESKA
- 70 BASKETWEAVE
- 71 FLAGSTONE
- 71 STANDARD PRESS
- 72 DADO CERAMICA PORCELAIN SLABS



### UNIT

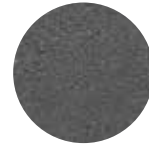


12" x 24" x 2"  
300mm x 600mm x 50mm

### COLOURS



HARBOUR GREY



ULTRA BLACK



**HARBOUR GREY**



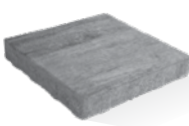
# Ventura **NEW**

## SIGNATURE SERIES

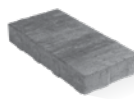
### UNITS



24" x 16" x 2.36"  
600mm x 400mm x 60mm



16" x 16" x 2.36"  
400mm x 400mm x 60mm



8" x 16" x 2.36"  
200mm x 400mm x 60mm

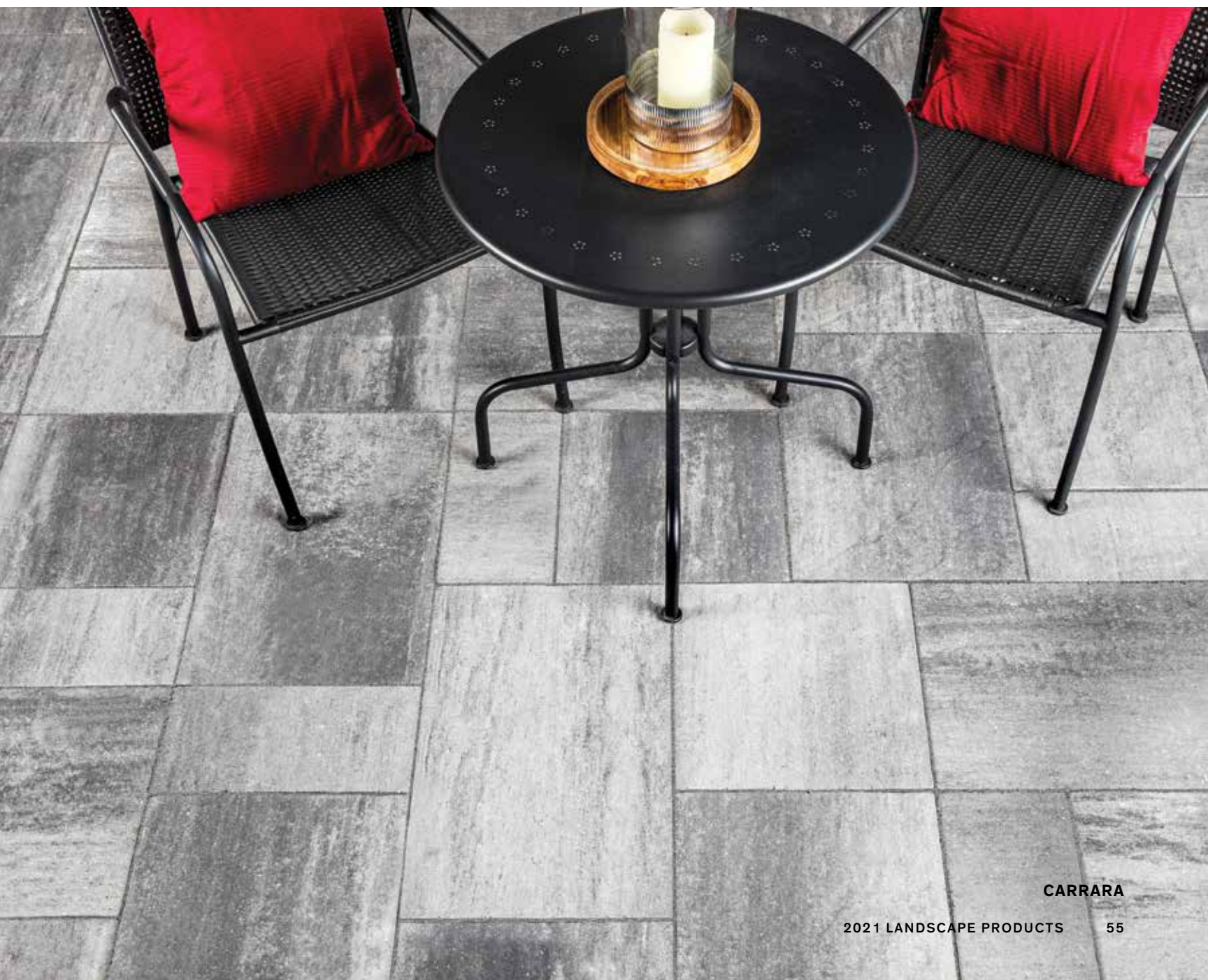
### COLOURS



CARRARA



GLACIER CREEK



CARRARA





SILVER BIRCH

56 1-800-BESTWAY | BESTWAYSTONE.COM



# Balsam

SIGNATURE SERIES

## UNIT



31.5" x 7.87" x 2.36"  
800mm x 200mm x 60mm

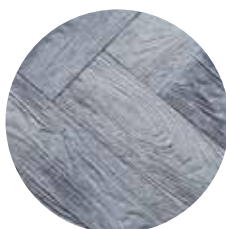
## COLOURS



GLACIER CREEK



MUSKOKA



SILVER BIRCH



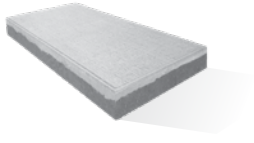
GLACIER CREEK



# BW300

## SIGNATURE SERIES

### UNIT



11.81" x 23.62" x 2.36"  
300mm x 600mm x 60mm

### COLOURS



NIGHTFALL



PEARL



PHANTOM



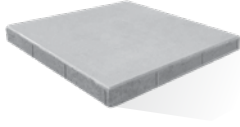
PEARL AND PHANTOM



# Opus

## SIGNATURE SERIES

### UNIT



23.62" x 23.62" x 2.36"  
600mm x 600mm x 60mm

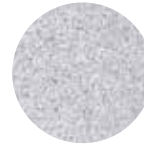
### COLOURS



CARRARA



HARBOUR GREY



PEARL



ULTRA BLACK



CARRARA





GLACIER CREEK

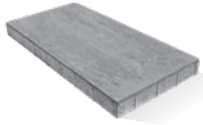
60 1-800-BESTWAY | BESTWAYSTONE.COM



# Avari

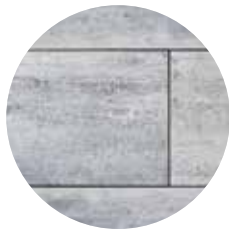
## ENHANCED SERIES

### UNIT

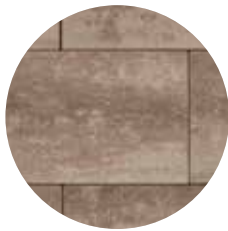


28" x 14" x 2"  
710mm x 355mm x 50mm

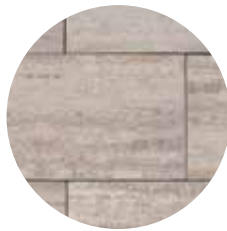
### COLOURS



CARRARA  
(DESIGNLOC ONLY)



DRIFTWOOD



GLACIER CREEK



GREY MIX



ULTRA BLACK



CARRARA





GLACIER CREEK

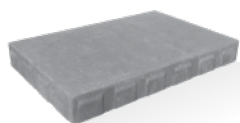
62 1-800-BESTWAY | BESTWAYSTONE.COM



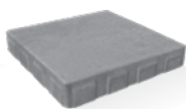
# Trevista 50 Smooth

SIGNATURE SERIES

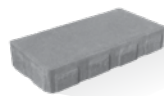
## UNITS



19.5" x 13" x 2"  
495mm x 330mm x 50mm



13" x 13" x 2"  
330mm x 330mm x 50mm



6.5" x 13" x 2"  
165mm x 330mm x 50mm

\*ALL SIZES SOLD AND PACKAGED TOGETHER IN A 1:2:2 RATIO

## COLOURS



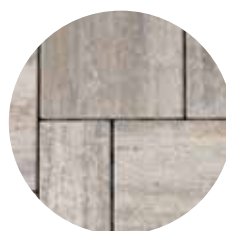
BEIGE MIX



CARRARA



DRIFTWOOD



GLACIER CREEK



GREY MIX



GLACIER CREEK





GLACIER CREEK

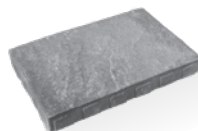
64 | 1-800-BESTWAY | BESTWAYSTONE.COM



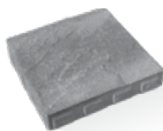
# Trevista 50 Textured

SIGNATURE SERIES

## UNITS



19.5" x 13" x 2"  
495mm x 330mm x 50mm



13" x 13" x 2"  
330mm x 330mm x 50mm



6.5" x 13" x 2"  
165mm x 330mm x 50mm

\*ALL SIZES SOLD AND PACKAGED TOGETHER IN A 1:2:2 RATIO

## COLOURS



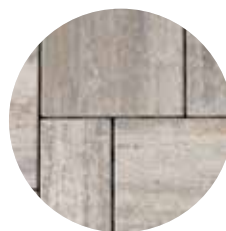
BEIGE MIX



CARRARA



DRIFTWOOD



GLACIER CREEK



GREY MIX



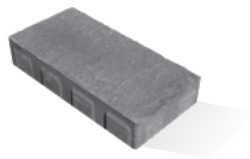
GREY MIX



# Richmond 50

SIGNATURE SERIES

## UNIT

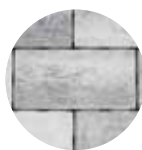


6.5" x 13" x 2"  
165mm x 330mm x 50mm

## COLOURS



BEIGE MIX



GLACIER CREEK



GREY MIX



ULTRA BLACK



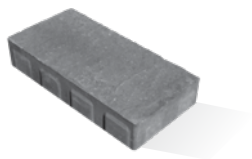
GREY MIX



# Adelaide 50

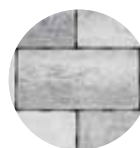
## SIGNATURE SERIES

### UNIT



6.5" x 13" x 2"  
165mm x 330mm x 50mm

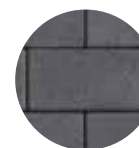
### COLOURS



GLACIER CREEK



GREY



ULTRA BLACK



GLACIER CREEK





GLACIER CREEK

68 1-800-BESTWAY | BESTWAYSTONE.COM



# Tresca

## ENHANCED SERIES

### UNITS



19.68" x 19.68" x 2"  
508mm x 508mm x 50mm



9.84" x 19.68" x 2"  
254mm x 508mm x 50mm



9.84" x 9.84" x 2"  
254mm x 254mm x 50mm

\*ALL SIZES SOLD AND PACKAGED SEPARATELY

### COLOURS



DRIFTWOOD



GLACIER CREEK



GREY MIX



GLACIER CREEK



# Basketweave

CLASSIC SERIES

## UNITS

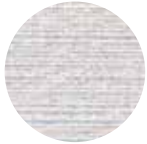


**24 x 30**  
23.62" x 29.52" x 1.75" (2" or 2.5")  
600mm x 750mm x 45mm (50 or 65)

**24 x 24**  
23.62" x 23.62" x 1.75"  
600mm x 600mm x 45mm

**12 x 24**  
11.81" x 23.62" x 1.75"  
300mm x 600mm x 45mm

## COLOUR



WHITE



WHITE



# Flagstone

## CLASSIC SERIES

### UNIT



**24 x 24**  
 23.62" x 23.62" x 1.75"  
 600mm x 600mm x 45mm

### COLOURS



GREY



SAHARA BLEND



GREY

# Standard Press

## CLASSIC SERIES

### UNITS\*



**24 x 30**  
 23.62" x 29.52" x 1.75"  
 600mm x 750mm x 45mm  
 \*Only available in grey

**16 x 16**  
 15.75" x 15.75" x 1.75"  
 400mm x 400mm x 45mm  
 \*Only available in red and grey

**12 x 24**  
 11.81" x 23.62" x 1.75"\*  
 300mm x 600mm x 45mm  
 \*Only available in grey

**24 x 24**  
 23.62" x 23.62" x 1.75" (2" or 2.5")  
 600mm x 600mm x 45mm (50 or 65)  
 \*Available in all colours,  
 2" & 2.5" thickness in grey only

### COLOURS



CHARCOAL



GREY



RED



GREY






**UNIVERSAL OAK**  
16" X 32" (40.5 X 81 CM)



# Dado Ceramica Porcelain Slabs

- EASY TO INSTALL, LIGHT WEIGHT
- FROST AND MOLD RESISTANT
- EASY TO CLEAN
- DESIGNED AND MADE IN ITALY 

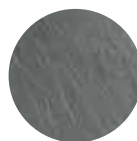


## UNITS

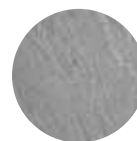


23.62" x 23.62" x 0.78"  
600mm x 600mm x 20mm

## COLOURS



COUNTRY BLACK SLATE



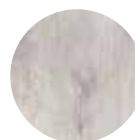
COUNTRY GREY SLATE



SCOUT WHITE



15.95" x 31.89" x 0.78"  
405mm x 810mm x 20mm



JASMINE



UNIVERSAL OAK



SCOUT WHITE





# Walls



Every landscape needs a vertical element, and our selection of walls work seamlessly with our pavers and slabs to create that ideal topography. From a contemporary soft touch to a rustic split face, our collection of walls are engineered to maximize design flexibility and installation efficiency.

---

- 76 SOHO
- 77 HAZELTON
- 78 ANTICO STACKER
- 79 GARDEN LOCK
- 80 PARKWALL
- 81 ROCKTON
- 82 BELVEDERE WALL & COPING
- 83 IKON
- 84 RIDGEWALL SRW SYSTEM





SOHO WALL (GLACIER CREEK)  
AVARI (GLACIER CREEK)  
ADELAIDE BORDER & ACCENT  
(GREY & ULTRA BLACK)

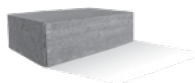


# Soho

## SIGNATURE SERIES

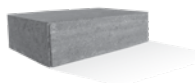


### UNITS



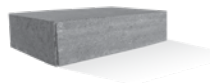
#### 350 BLOCK

13.78" w x 8.85" d x 3.94" h  
350mm x 225mm x 100mm



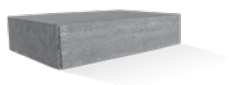
#### 450 BLOCK

17.72" w x 8.85" d x 3.94" h  
450mm x 225mm x 100mm



#### 550 BLOCK

21.65" w x 8.85" d x 3.94" h  
550mm x 225mm x 100mm



#### 650 BLOCK

25.59" w x 8.85" d x 3.94" h  
650mm x 225mm x 100mm



#### CORNER

13.78" w x 8.85" d x 3.94" h  
350mm x 225mm x 100mm

\*ALL BLOCK UNITS ARE SOLD AND PACKAGED TOGETHER IN AN EQUAL RATIO

### COLOURS



CARRARA



DRIFTWOOD



GLACIER CREEK



GREY MIX



ULTRA BLACK



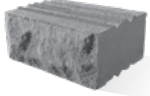
GLACIER CREEK



# Hazelton

## CLASSIC SERIES

### UNITS



#### BLOCK

11.81" w x 8.85" d x 4.92" h  
300mm x 225mm x 125mm



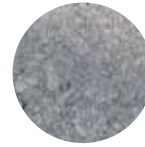
#### CORNER

12.79" w x 6.88" d x 4.92" h  
325mm x 175mm x 125mm

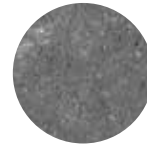
### COLOURS



BEIGE MIX



GREY MIX



ULTRA BLACK

\*BLOCK AND CORNER UNITS SOLD AND PACKAGED SEPARATELY  
USE MONTANA, RIVIERA, GARDEN LOCK OR SOPRA COPING FOR IDEAL FINISH



BEIGE MIX



# Antico Stacker

CLASSIC SERIES

## UNIT

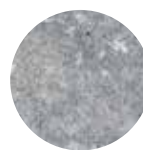


7.87" w x 11.81" d x 3.93" h  
200mm x 300mm x 100mm

## COLOURS



BEIGE MIX



GREY MIX



SAHARA BLEND



ULTRA BLACK



GREY MIX



# Garden Lock

## CLASSIC SERIES

### UNITS

#### TRIPLE



14.96" w x 8.85" d x 4.92" h  
380mm x 225mm x 125mm



9.84" w x 8.85" d x 4.92" h  
250mm x 225mm x 125mm



7.48" w x 8.85" d x 4.92" h  
190mm x 225mm x 125mm



**COPING**  
15.74" w x 10.23" d x 2.95" h  
400mm x 260mm x 75mm



**WEDGE**  
8.07"/5.31" w x 8.85" d x 4.92" h  
205/135mm x 225mm x 125mm



**WEDGE COPING**  
8.23"/5.17" w x 10.23" d x 2.95" h  
209/131mm x 260mm x 75mm



**CORNER**  
13.46" w x 8.85" d x 4.92" h  
342mm x 225mm x 125mm

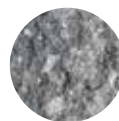
### COLOURS



BEIGE MIX



GREY



GREY MIX



RUSTIC SALMON MIX



WINTERBORN



ULTRA BLACK  
(COPING ONLY)

\*TRIPLE SOLD AND PACKAGED TOGETHER IN A 1:1:1 RATIO | CORNER UNIT NOW AVAILABLE AND SOLD SEPARATELY



GREY MIX



# Parkwall

## CLASSIC SERIES

### UNITS



#### REGULAR

7.87" w x 11.61" d x 5.9" h  
200mm x 295mm x 150mm



#### TAPERED

7.87" w (7" w) x 11.61" d x 5.9" h  
200mm (177) x 295mm x 150mm



#### CORNER

7.87" w x 11.61" d x 5.9" h  
200mm x 295mm x 150mm



#### COPING

23.62" w x 11.81" d x 2.95" h  
600mm x 300mm x 75mm

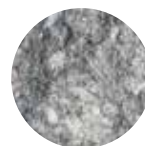
### COLOURS



BEIGE MIX



GREY



GREY MIX



RED MIX



SAHARA BLEND



SALMON MIX

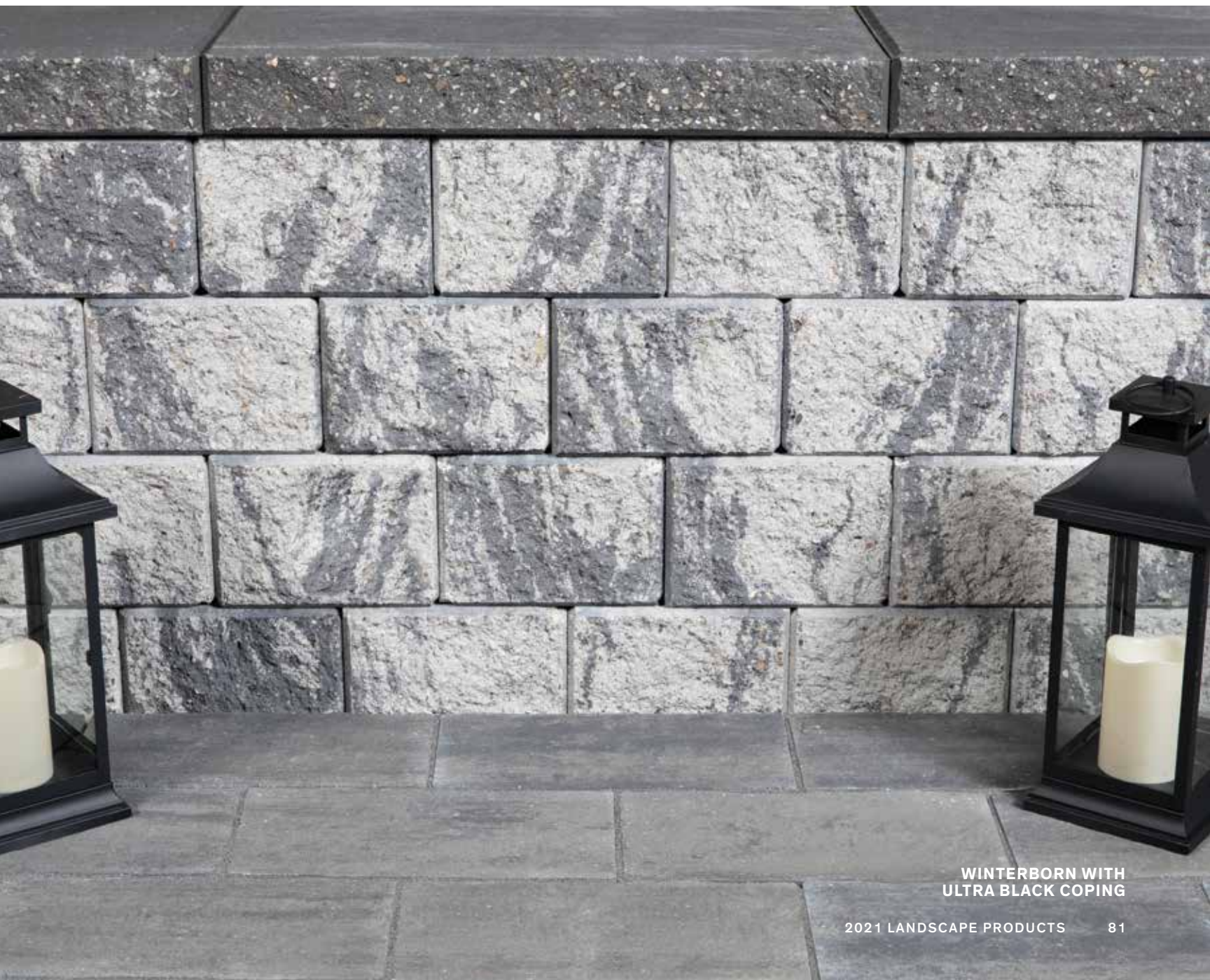


WINTERBORN



ULTRA BLACK  
(COPING ONLY)

\*ALL SIZES SOLD AND PACKAGED SEPARATELY. TAPERED AVAILABLE IN SELECT COLOURS.



WINTERBORN WITH  
ULTRA BLACK COPING



# Rockton

## CLASSIC SERIES

### UNITS



42" w x 10.5" d x 6" h  
1067mm x 267mm x 152mm



30" w x 10.5" d x 6" h  
762mm x 267mm x 152mm



21" w x 10.5" d x 6" h  
533mm x 267mm x 152mm



12" w x 10.5" d x 6" h  
304mm x 267mm x 152mm



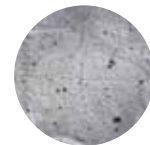
### CORNER

21" w x 10.5" d x 6" h  
533mm x 267mm x 152mm

### COLOURS

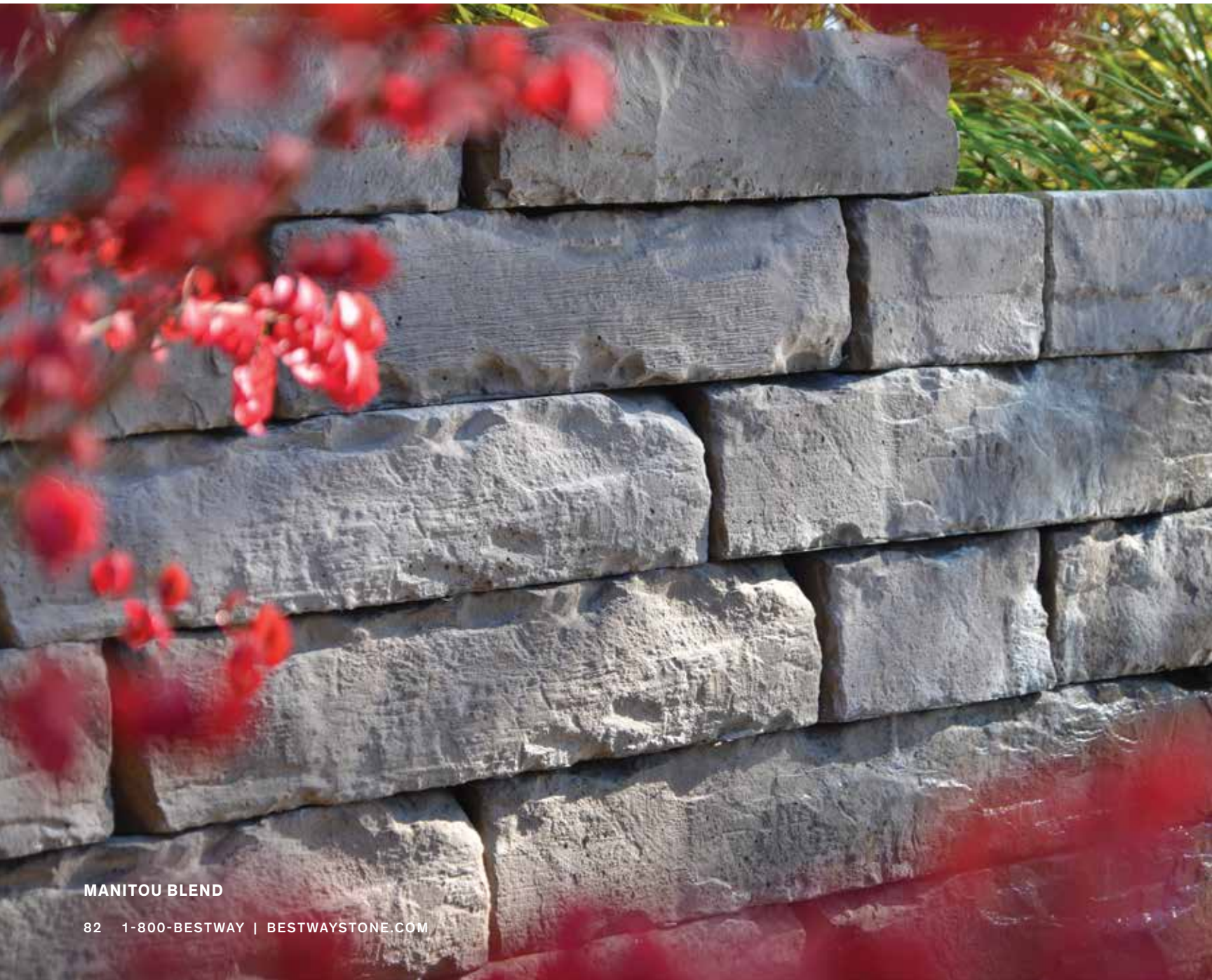


FOND DU LAC



MANITOU BLEND

\*CORNER UNIT SOLD AND PACKAGED SEPARATELY



MANITOU BLEND



# Belvedere Wall & Coping

CLASSIC SERIES

## UNITS



### BLOCK

6.02"/4.02"w x 9.02"d x 6.02" and 2.99"h  
153mm/102mm(w) x 229mm(d) x 153mm or 76mm(h)

12.01"/10"w x 9.02"d x 6.02" and 2.99"h  
305mm/254mm(w) x 229mm(d) x 153mm or 76mm(h)

18.03"/15.98"w x 9.02"d x 6.02" and 2.99"h  
458mm/406mm(w) x 229mm(d) x 153mm or 76mm(h)



### CORNER

15" x 14.02"w x 9.02"d  
6.02" or 2.99"h



### COPING

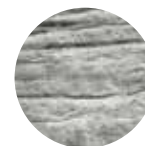
6.02"/4.02"w x 10.24"d x 2.24"h  
153mm/102mm(w) x 260mm(d) x 57mm(h)

12.01"/10"w x 10.24"d x 2.24"h  
305mm/254mm(w) x 260mm(d) x 57mm(h)

18.03"/15.98"w x 10.24"d x 2.24"h  
458mm/406mm(w) x 260mm(d) x 57mm(h)

381mm x 356mm(w) x 229mm(d)  
153mm or 76mm(h)

## COLOURS



MANITOU BLEND



WINDSOR BLEND



WINDSOR BLEND



### UNIT



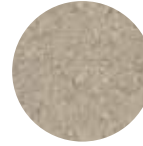
### BLOCK UNIT

39.4" w x 14" d x 6.7" h  
1000mm x 355mm x 170mm

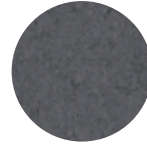
### COLOURS



GREY



SAHARA BLEND



ULTRA BLACK



GREY & ULTRA BLACK



# Ridgewall SRW System

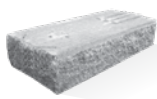
CLASSIC SERIES

## UNITS



### BLOCK UNIT

39.4" w x 17.1" d x 7.68" h  
1000mm x 435mm x 195mm



### 90° CORNER UNIT

36.9" w x 17.1" d x 7.68" h  
937.5mm x 435mm x 195mm



### 45° CORNER UNIT

39.4" w x 17.1" d x 7.68" h  
1000mm x 435mm x 195mm



### COPING UNIT

39.4" w x 19.7" d x 7.68" h  
1000mm x 500mm x 195mm

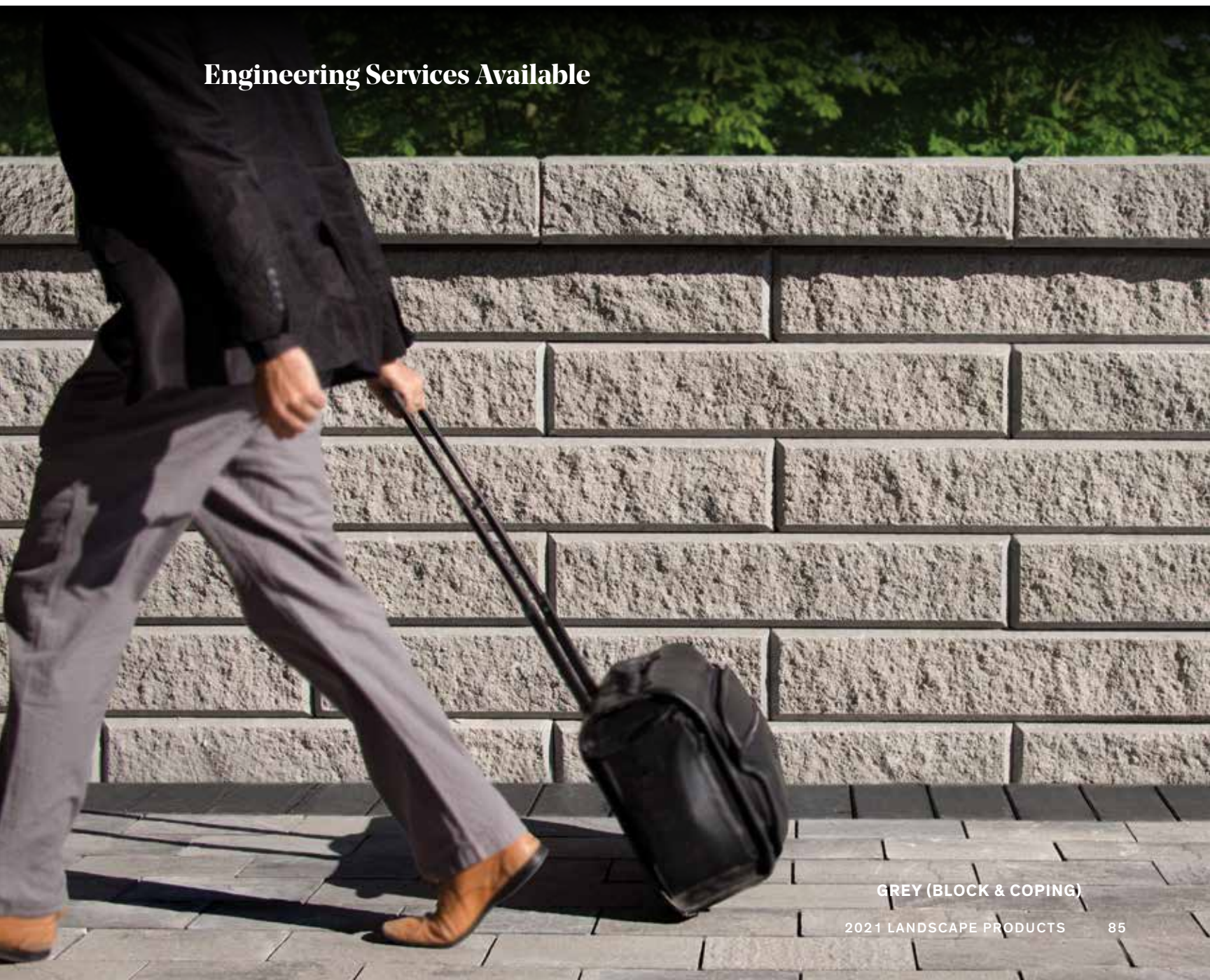
## COLOUR



GREY (BLOCK & COPING)

FOR MORE INFORMATION VISIT:  
[WWW.BESTWAYSTONE.COM/RIDGEWALL](http://WWW.BESTWAYSTONE.COM/RIDGEWALL)

## Engineering Services Available



GREY (BLOCK & COPING)





# Steps, Caps & Curbs



Design is all in the details. We've created a series of steps, caps and curbs that integrate seamlessly to finish off edge details, walkways and vertical features.

---

- 88 IKON STEP
- 89 RIDGE STEP
- 90 CAMDEN STEP
- 91 SOPRA COPING
- 92 MONTANA CAP
- 93 RIVIERA CAP
- 94 BAROLLO ROUND EDGE COPING
- 95 PARKWALL COLUMN CAP
- 95 BULLNOSE COLUMN CAP
- 96 DIMENSIONAL COPING
- 96 ANTICO CURB
- 97 GARDEN CURB
- 97 DRIVEWAY CURB



# Ikon Step

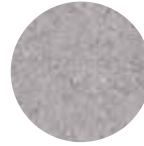
- MODERN SMOOTH FINISH
- ALLOWS FOR 14" STEP TREAD

## UNIT

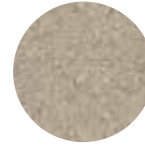


39.4" w x 14" d x 6.7" h  
1000mm x 355mm x 170mm

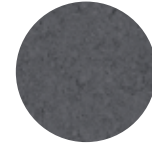
## COLOURS



GREY



SAHARA BLEND



ULTRA BLACK

\*CAN BE USED AS A COPING FOR THE RIDGEWALL SRW SYSTEM



GREY



# Ridge Step

## UNIT



39.4" w x 19.7" d x 7.68" h  
1000mm x 500mm x 195mm

## COLOURS



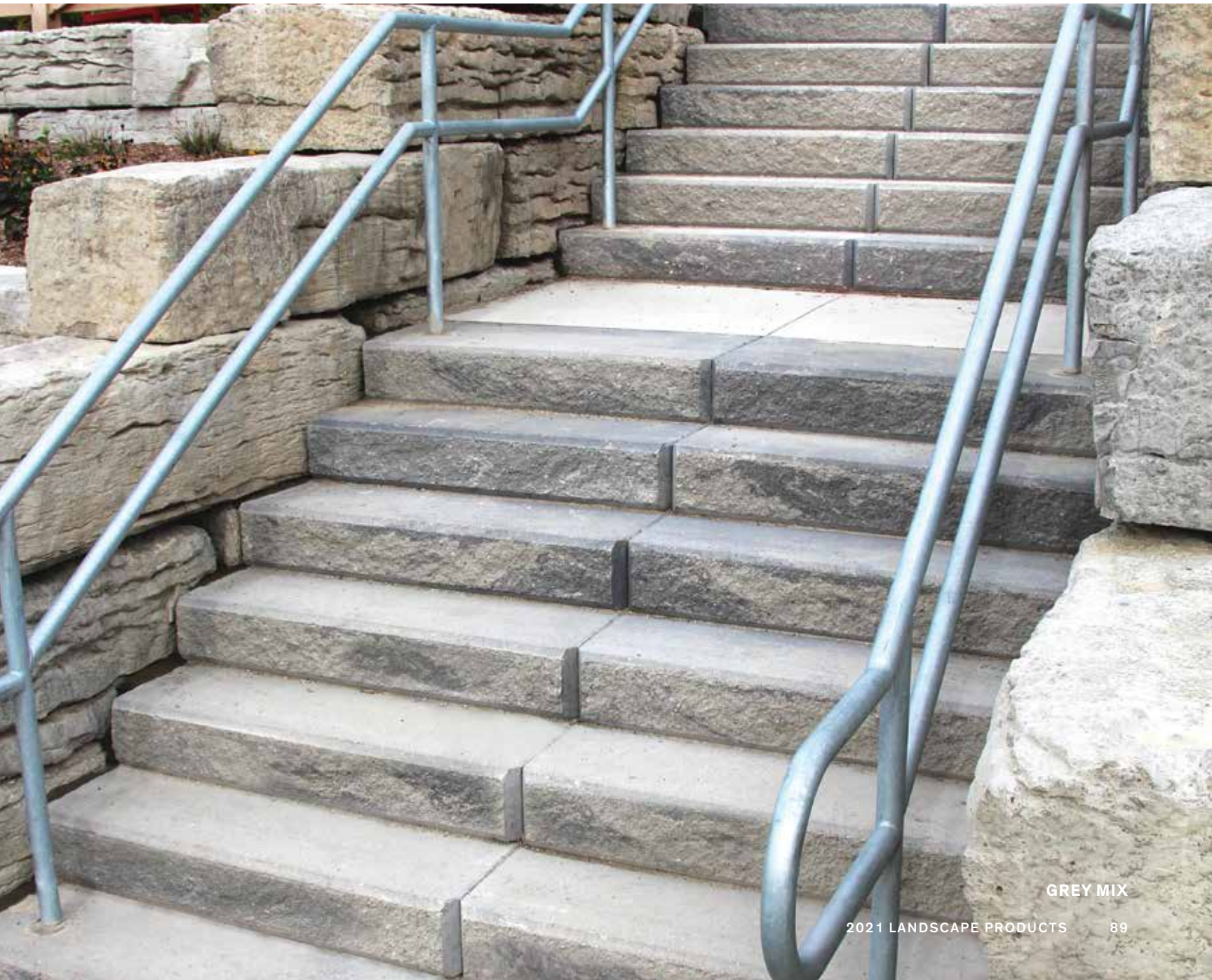
BEIGE MIX



GREY



GREY MIX

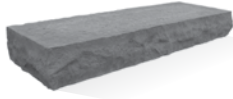


GREY MIX

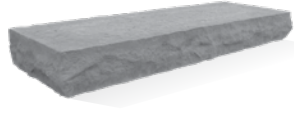


# Camden Step

## UNITS



48" w x 16" d x 6" h  
1219mm x 406mm x 152mm



72" w x 16" d x 6" h  
1829mm x 406mm x 152mm



14" FILLER UNIT



28" FILLER UNIT

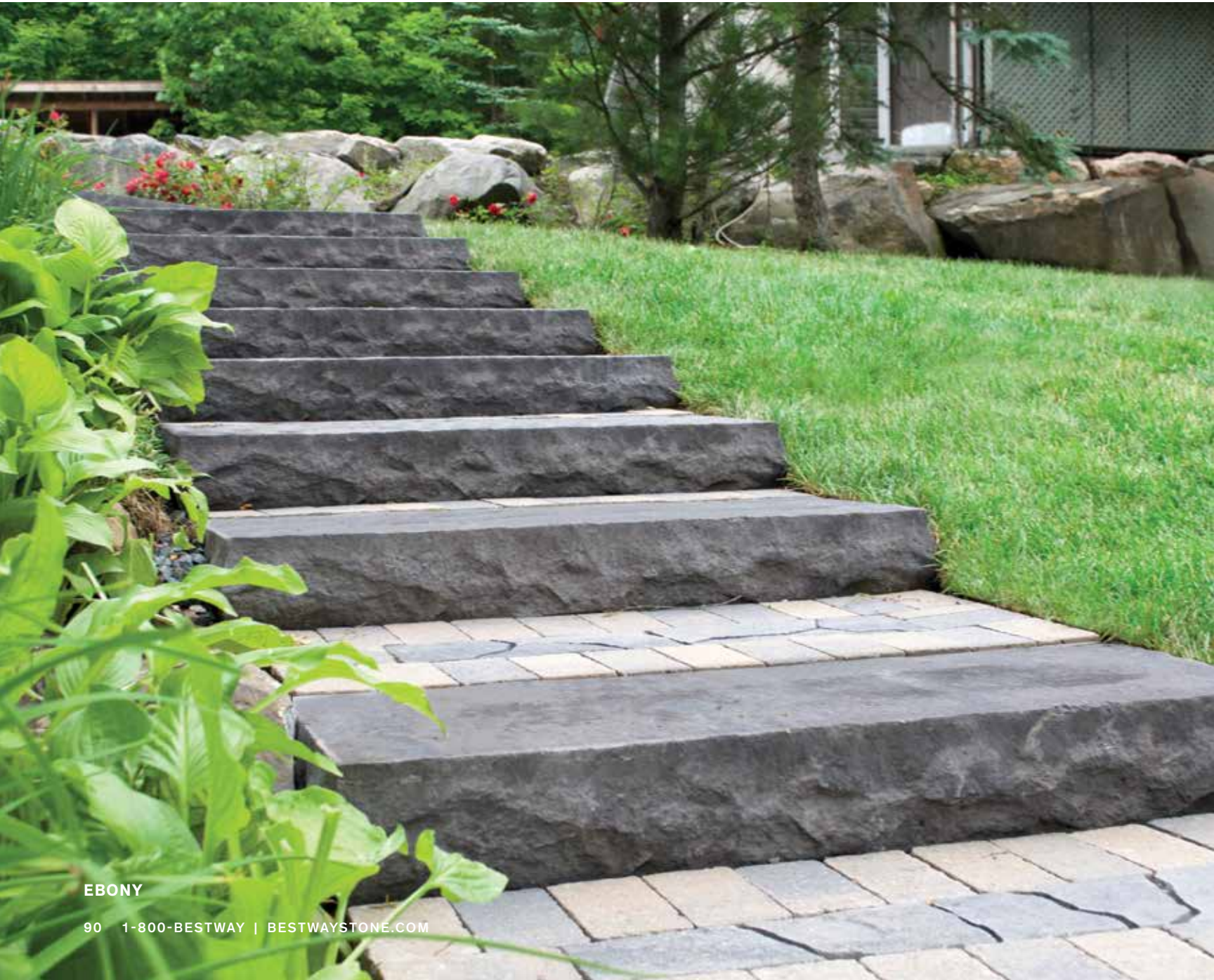
## COLOURS



EBONY



SAHARA BLEND



EBONY



# Sopra Coping

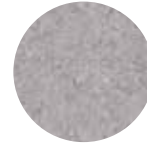
- SMOOTH CONTEMPORARY FINISH
- FITS ON PARKWALL, GARDEN LOCK, HAZELTON OR SOHO WALL SYSTEM
- ALLOWS FOR 14" STEP TREAD

## UNIT

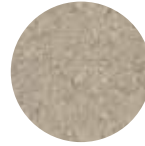


28" w x 14" d x 2.36" h  
710mm x 355mm x 60mm

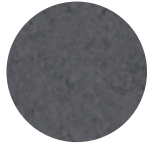
## COLOURS



GREY



SAHARA BLEND



ULTRA BLACK

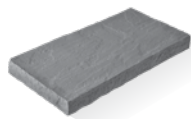


ULTRA BLACK



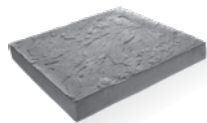
# Montana Cap

## UNITS



**WALL CAP**

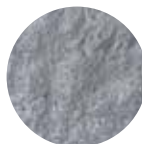
21.3" w x 10.6" d x 2" h  
540mm x 270mm x 50mm



**COLUMN CAP**

23.6" w x 23.6" d x 3" h  
600mm x 600mm x 75mm

## COLOURS



EBONY



GRANITE



SANDSTONE

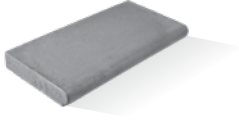


EBONY



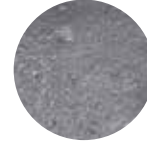
# Riviera Cap

## UNIT



23.6" w x 11.8" d x 2.36" h  
600mm x 300mm x 60mm

## COLOURS



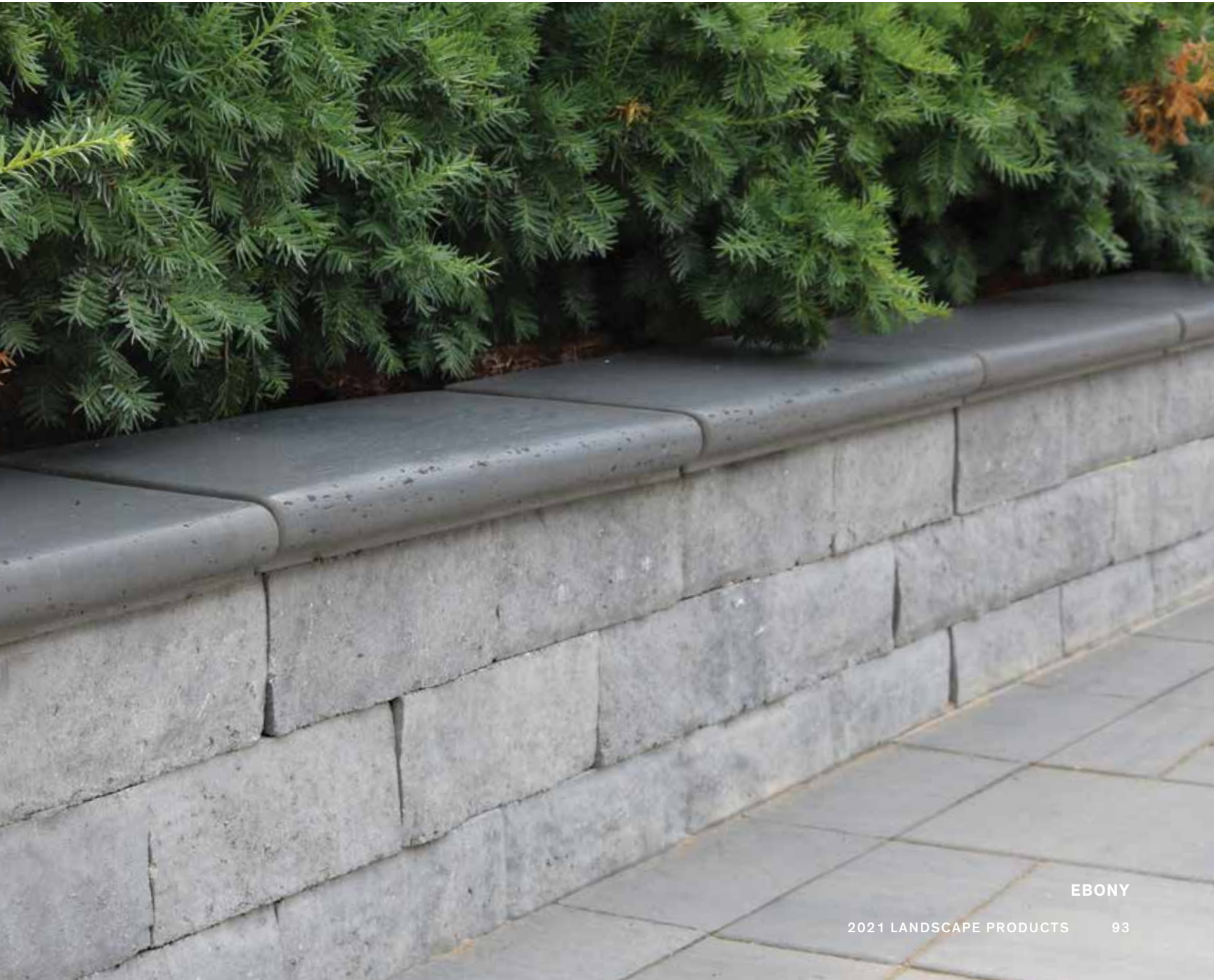
EBONY



GRANITE



SANDSTONE

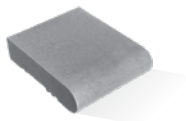


EBONY



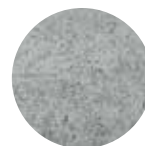
# Barollo Round Edge Coping

## UNIT

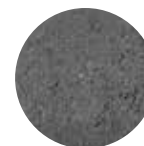


9.84" w x 12.46" d x 2.95" h  
250mm x 317mm x 75mm

## COLOURS



GREY



ULTRA BLACK

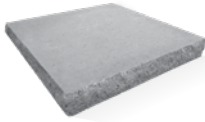


ULTRA BLACK



# Parkwall Column Cap

## UNIT



23.62" w x 23.62" d x 2.95" h  
600mm x 600mm x 75mm

## COLOURS



GREY



SAHARA BLEND



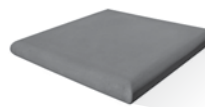
ULTRA BLACK



GREY

# Bullnose Column Cap

## UNIT



23.62" w x 23.62" d x 2.95" h  
600mm x 600mm x 75mm

## COLOURS



EBONY



GREY



SAHARA BLEND



EBONY



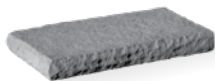
# Dimensional Coping

## UNITS



### 18" COPING

18" w x 13" d x 2.5" h  
450mm x 330mm x 65mm

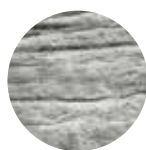


### 24" COPING

24" w x 13" d x 2.5" h  
600mm x 330mm x 65mm

\*ALL SIZES SOLD AND PACKAGED TOGETHER

## COLOURS



MANITOU BLEND



WINDSOR BLEND



WINDSOR

# Antico Curb

## UNIT



15.75" w x 3.95" d x 5.91" h  
400mm x 100mm x 150mm

## COLOURS



BEIGE MIX



GREY MIX



RUSTIC  
SALMON MIX

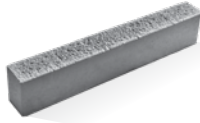


GREY MIX



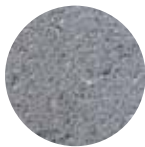
# Garden Curb

## UNIT



31.5" w x 3.95" d x 5.91" h  
800mm x 100mm x 150mm

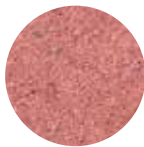
## COLOURS



CHARCOAL



GREY



RED



GREY

# Driveway Curb

## UNIT



39.4" w x 5.9" d x 5.9" h  
1000mm x 150mm x 150mm

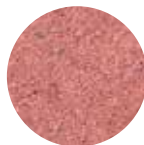
## COLOURS



CHARCOAL



GREY



RED



CHARCOAL





# Enviro



Beautify your landscape while keeping the environment's best interests in mind. Our line-up of enviro products protect against stress that certain elements like storm water run-off and the heat island effect can have on our environment's well-being.

---

100 MODERNA PERMEABLE PAVER SYSTEM  
101 WHITE SOLAR REFLECTIVE ROOFTOP PAVER



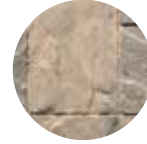
# Moderna Permeable Paver System

## UNIT



16" x 8/12" x 2.75"  
405mm x 205/305mm x 70mm

## COLOURS



BEIGE MIX



GREY MIX



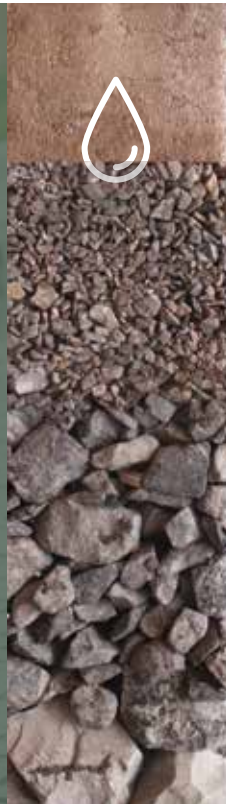
## About Moderna

Most permeable pavers are simple in their design and finished product, but this is where engineering and style combine. The Moderna Paving Stone, a decorative, innovative and versatile single-shaped paving stone, that provides stormwater control without sacrificing style or design.

Following PICP (Permeable Interlocking Concrete Pavement) standards, the Moderna Paving Stone provides a complete system, helping to eliminate runoff.

### BENEFITS OF MODERNA

- eliminates surface runoff
- system design recharges groundwater
- reduces need for snow removal
- provides contaminant filtration
- supported by paver lifetime guarantee
- earn LEED® credits



GREY MIX

100 1-800-BESTWAY | BESTWAYSTONE.COM



# White Solar Reflective Rooftop Pavers

## UNIT



## UNIT SIZE

23.62" x 23.62" x 1.75"  
600mm x 600mm x 45mm

## PEDESTALS AVAILABLE



AVAILABLE IN A 2" AND 2.5" THICKNESS  
SPECIAL ORDER ITEM, LEAD TIME REQUIRED

## COLOUR



WHITE



## LEED<sup>®</sup>ing the Way

Best Way Stone is committed to creating sustainable products that will aid in the future development of our prospering communities. Our White Solar Reflective (SR) Rooftop Paver not only aids in solar reflectivity but can also contribute to LEED<sup>®</sup> project certification.



WHITE



# Outdoor elements.

Adding a little heat adds a whole new element to an outdoor space. Whether you are a cooking enthusiast or like to relax by a fireplace, our stone-based features can give your outdoor lifestyle its spark.

Visit [bestwaystone.com/outdoorelements](https://bestwaystone.com/outdoorelements) for more information and to see our entire outdoor elements collection.







**GARDEN LOCK FIRE PIT (GREY MIX)**  
\*ADDITIONAL ROW SHOWN.  
FIRE GLASS INSERT SHOWN HERE  
NOT INCLUDED.



# Hardscaping Accessories

Best Way Stone has curated a collection of accessories to finish your outdoor space. This series consists only of the products we know and trust in our landscape designs – so you can trust them in yours, too.

## JOINT SAND



Specially formulated mixture of graded sand and high-performance polymer binding agent designed for all paver and natural stone joints up to 4" (10 cm). It will remain stable and flexible in the most extreme weather conditions and freeze/thaw cycles when properly installed.

**Sable Marco**  
Evolution Polymeric



## SEALERS & CLEANERS

### Seal King paving stone sealer

- water and acrylic based
- high and satin gloss finish
- efflorescence remover
- oil and grease remover
- seal grip
- sealer remover

### Kimbol sealer

- water and acrylic based
- high and satin gloss finish
- efflorescence remover
- oil and grease remover







## TOOLS, ACCESSORIES & OTHER

### Adhesives

- butyl tape
- landscape adhesive tubes

### Aggregates

- 1/4" chip
- 3/8" gravel (loose)
- 3/4" crusher run (bags only)
- 3/4" gravel (bags only)
- brick sand
- concrete sand
- limestone screening

### Edge Restraints

- Brickstop aluminum edge restraint
- Brickstop Beast plastic edge restraint
- Snapedge plastic edge restraint
- spikes

### Fabrics

- construction fabric
- geogrid tie-back
- landscape fabric

### Ice Control

- Britech Ice Melt System

### Tools & Accessories

- brooms
- caulking guns
- gloves
- hand tampers
- mallets/hammers
- Solar lights
- levels
- plate tampers
- shovels
- string lines
- wheel barrows



**Pave Tool**  
INNOVATORS  
Made for Landscaping Professionals

## PRECAST CONCRETE

- parking lot bumper curbs (96"x10"x6") (96"x12"x8")
- simplicity steps (36"w / 48"w / 60"w / 72"w)
- platforms (36"w / 48"w)
- chimney caps
- keystones
- splash pads
- step risers
- window sills

Visit [bestwaystone.com](http://bestwaystone.com) for more information.





# Care & Considerations

## Setting a base

The quality of work put into establishing a solid foundation is vital to the overall performance of your landscape design.

When properly constructed, a solid base foundation helps prevent paver settling, shifting, and water accumulation. Use of edge restraints and jointing sand is recommended as best practice by ICPI (Interlocking Concrete Pavement Institute).

When choosing and installing jointing sand, please ensure to follow the directions given by the manufacturer. To find out more about base preparation and installation practices, visit [www.icpi.org](http://www.icpi.org).

## Colour distribution

When installing stone, we recommend you select a mix of materials from several different bundles to ensure a balanced distribution of surface colour textures and colour mixtures.

Always verify colours and products chosen for your concrete landscape project with your contractor or landscape designer prior to installation. Physical or printed colour samples are only representations of the chosen product. If you notice a discrepancy, notify us immediately before continuing with your project. Full installation is understood as your acceptance of the product's condition.

## Concrete care

Maintaining the surface of your concrete pavers is essential to their aesthetic. Sealing your concrete pavers can enhance the colour, but it's optional as our pavers are just as durable with or without the addition of sealants. If you plan on sealing your concrete products, always follow the manufacturer's instructions for proper application.

Unfortunately, even materials as durable as concrete can scratch, chip, or stain if handled incorrectly. When compacting our pavers, ensure that a rubber membrane is added to protect textured surfaces from potential damage. Use a rubber blade when removing snow from the surface of our pavers to prevent surface scratching and damage. Best Way Stone is not responsible for the damage left by the misuse of compaction or snow removal equipment.

## Efflorescence

Efflorescence is that white, powdery substance that appears on the surface of concrete and it's a naturally occurring process. Efflorescence does not affect the structural integrity or strength of the product and will usually wear off over time – although special cleaners can be used to speed up its removal. For more information visit [www.icpi.org](http://www.icpi.org).

## Choosing a Contractor

Although not required, hiring a qualified contractor makes installing stone a much more efficient and less stressful experience. When hiring a qualified professional we recommend they follow industry standard guidelines.

When hiring a contractor, we recommend collecting project references and samples of previous work. Make sure they offer a comprehensive warranty, and have all the required insurance and licenses. Any contractor will understand the industry standards for installing stone – you can download a copy to these guidelines by visiting [www.icpi.org](http://www.icpi.org).

## Where to find our products

Best Way Stone has an extensive network of dealers throughout Ontario, Quebec, and North-East Michigan. Visit our website to find a dealer near you: [www.bestwaystone.com/find-a-dealer](http://www.bestwaystone.com/find-a-dealer)







## Uxbridge Outdoor Design Centre

Speak to our customer service experts to help bring your design to life. Feel free to bring samples home along with some peace of mind.

---

**Outdoor Design Centre**  
65 Anderson Boulevard  
Uxbridge, ON

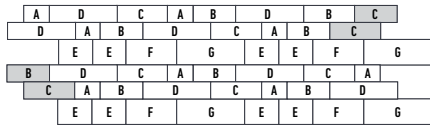
---





# Pattern Guides

## Manhattan Plank



## Avari, BW300 and Lyra



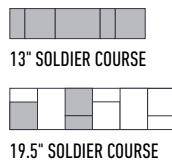
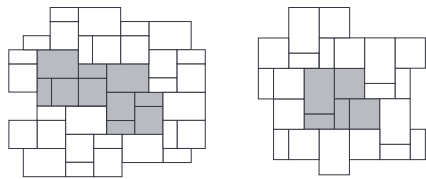
3/4 OFFSET  
\*FOR BEST PRACTICE

BRICK JOINT

TILE JOINT

HERRINGBONE

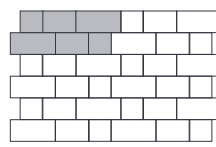
## Trevista 80 & 50



13" SOLDIER COURSE

19.5" SOLDIER COURSE

## Corso



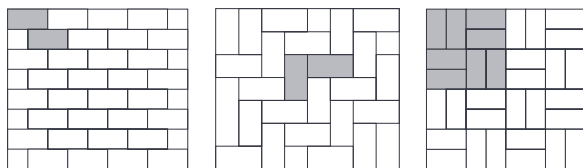
INSTALL RANDOMLY WITH A 1:1:1 RATIO

## Ardesia

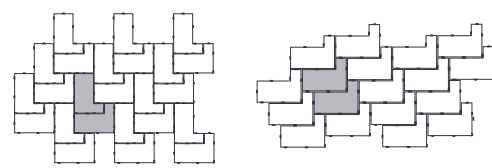


MOST RANDOM FINISH

## Adelaide 80 & 50 & Richmond 80 & 50



## Moderna



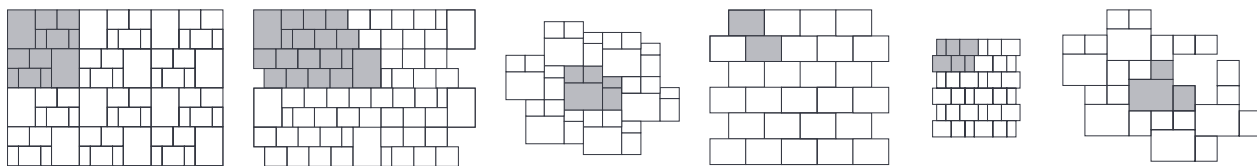
MOST RANDOM FINISH

MAXIMUM PERMEABILITY



16" SOLDIER COURSE

## Strada Nova



JUMBO 39%  
LARGE 46%  
SMALL 15%

JUMBO 25%  
LARGE 70%  
SMALL 5%

JUMBO 46%  
LARGE 18%  
MEDIUM 27%  
SMALL 9%

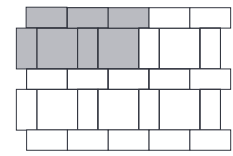
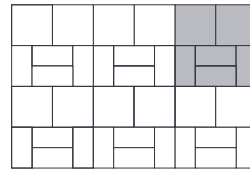
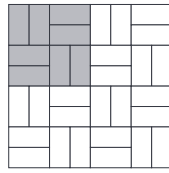
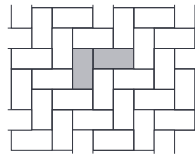
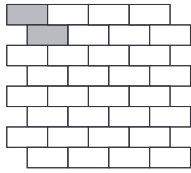
LARGE 100%

LARGE 44%  
MEDIUM 33%  
SMALL 23%

JUMBO 50%  
LARGE 20%  
MEDIUM 30%



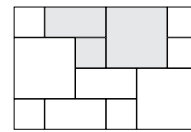
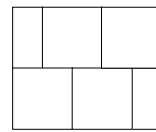
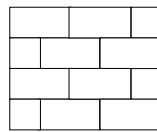
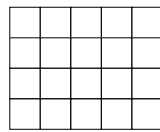
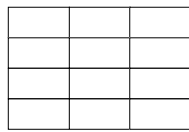
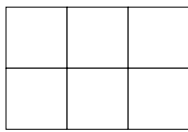
**Standard & Double Standard**



STANDARD 50%  
DOUBLE STANDARD 50%

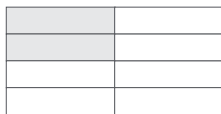
STANDARD 56%  
DOUBLE STANDARD 44%

**Tresca**

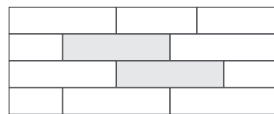


20X20 - 57%  
10X20 - 29%  
10X10 - 14%

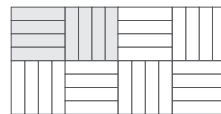
**Balsam**



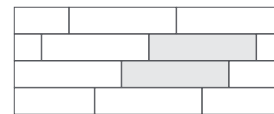
TILE JOINT



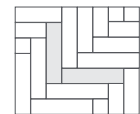
1/2 OFF-SET



PARQUET

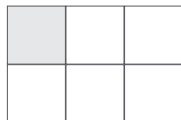


3/4 OFF-SET

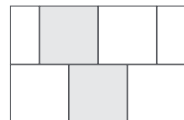


HERRINGBONE

**Opus**

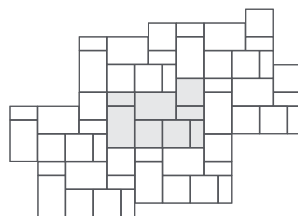
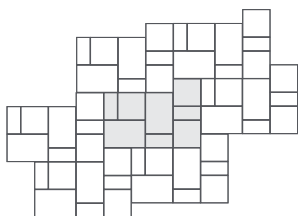


TILE JOINT



1/2 OFF-SET

**Ventura**













Masonry  
& Builder



# Chimney Caps Key Stones Simplicity Steps Splash Pads Window Sills

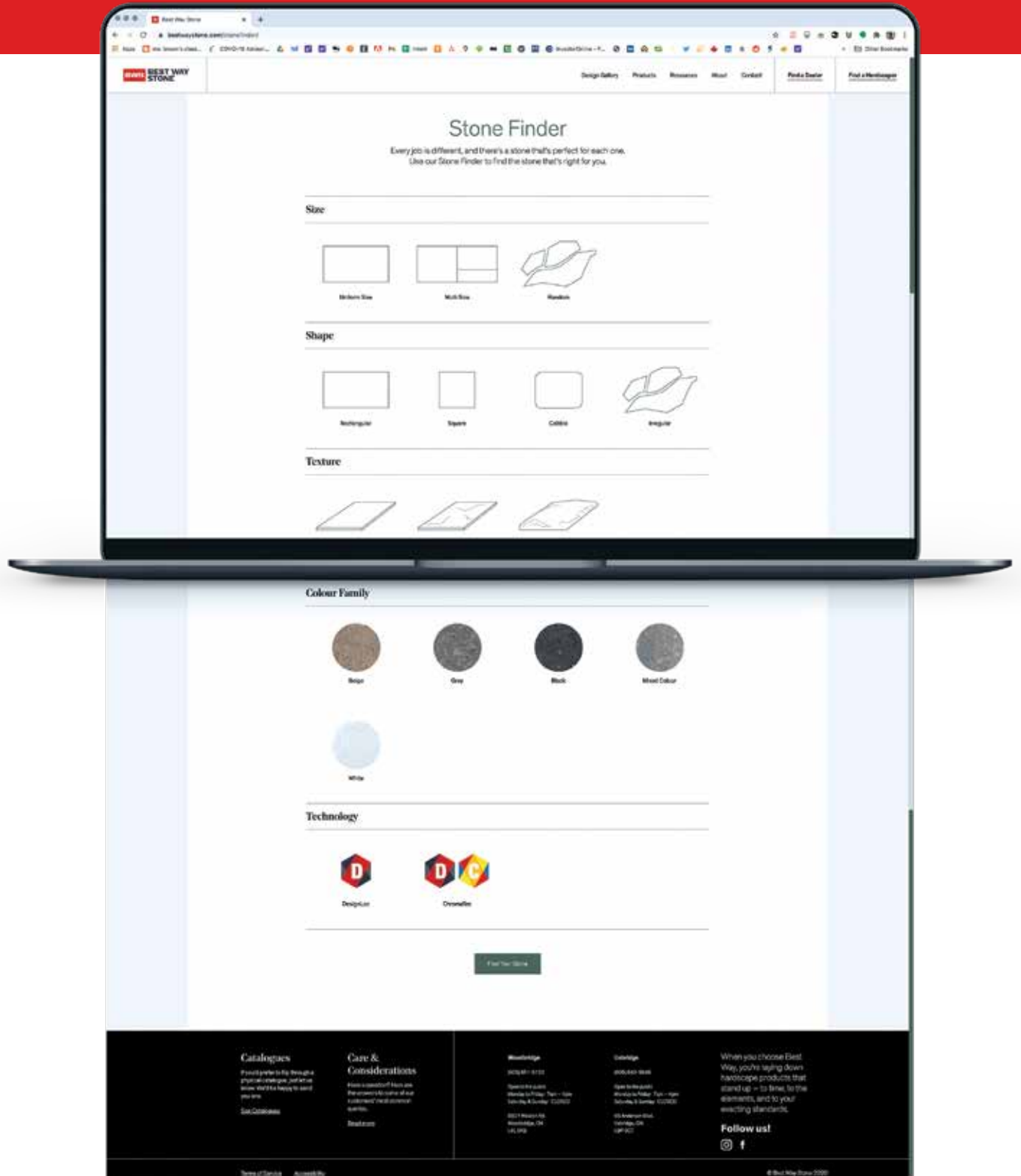
For information on our masonry & builder collection visit:  
[bestwaystone.com](http://bestwaystone.com)



# Stone Finder

Every project is different, and we have the right products to suit your style needs.

Visit [bestwaystone.com/stonefinder](https://bestwaystone.com/stonefinder) or look for it right on our homepage and find the stone that's right for you.







1-800-bestway (237-8929)  
bestwaystone.com

**Woodbridge (Head Office)**

8821 Weston Road  
Woodbridge, ON L4L 0K9  
T 905-851-5122  
F 905-851-7603

**Uxbridge**

65 Anderson Boulevard  
Uxbridge, ON L9P 0C7  
T 905-640-5845  
F 905-640-9773

 [facebook/bestwaystone](https://www.facebook.com/bestwaystone)

 [@bestwaystone](https://twitter.com/bestwaystone)

 [pinterest/bestwaystone](https://www.pinterest.com/bestwaystone)

 [houzz/bestwaystone](https://www.houzz.com/bestwaystone)

 [@bestwaystone](https://www.instagram.com/bestwaystone)

Outdoor  
living to the  
next level.